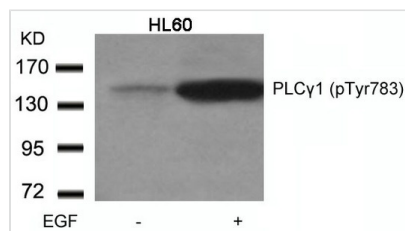




Phospho-PLCG1 (Tyr783) Antibody

| | |
|----------------------------|--|
| Product Code | CSB-PA910323 |
| Storage | Upon receipt, store at -20°C or -80°C. Avoid repeated freeze. |
| Uniprot No. | P19174 |
| Immunogen | Peptide sequence around phosphorylation site of tyrosine 783 (G-F-Y(p)-V-E) derived from Human PLCG1. |
| Raised In | Rabbit |
| Species Reactivity | Human,Mouse,Rat |
| Specificity | The antibody detects endogenous level of PLCg1 only when phosphorylated at tyrosine 783. |
| Tested Applications | ELISA,WB;WB:1:500-1:1000 |
| Form | Supplied at 1.0mg/mL in phosphate buffered saline (without Mg ²⁺ and Ca ²⁺), pH 7.4, 150mM NaCl, 0.02% sodium azide and 50% glycerol. |
| Purification Method | Antibodies were produced by immunizing rabbits with synthetic phosphopeptide and KLH conjugates. Antibodies were purified by affinity-chromatography using epitope-specific phosphopeptide. Non-phospho specific antibodies were removed by chromatography usi |
| Clonality | Polyclonal |
| Alias | Phosphoinositide phospholipase C; Phospholipase C-gamma-1; |
| Product Type | Polyclonal Antibody |
| Immunogen Species | Homo sapiens (Human) |
| Target Names | PLCG1 |

Image



Western blot analysis of extracts from HL60 cells untreated or treated with EGF using PLCg1(Phospho-Tyr783) Antibody.

Product Modify Phospho-Tyr783