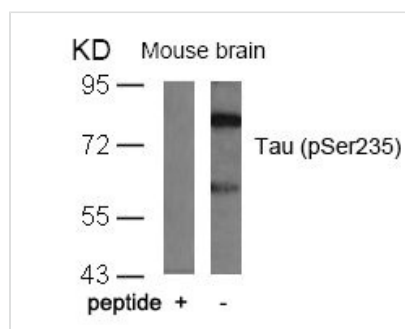




Phospho-MAPT (Ser235) Antibody

Product Code	CSB-PA076235
Storage	Upon receipt, store at -20°C or -80°C. Avoid repeated freeze.
Uniprot No.	P10636
Immunogen	Peptide sequence around phosphorylation site of serine 235 (P-K-S(p)-P-S) derived from Human Tau.
Raised In	Rabbit
Species Reactivity	Human,Mouse,Rat
Specificity	The antibody detects endogenous level of Tau only when phosphorylated at serine 235.
Tested Applications	ELISA,WB;WB:1:500-1:1000
Form	Supplied at 1.0mg/mL in phosphate buffered saline (without Mg ²⁺ and Ca ²⁺), pH 7.4, 150mM NaCl, 0.02% sodium azide and 50% glycerol.
Purification Method	Antibodies were produced by immunizing rabbits with synthetic phosphopeptide and KLH conjugates. Antibodies were purified by affinity-chromatography using epitope-specific phosphopeptide. Non-phospho specific antibodies were removed by chromatography using
Clonality	Polyclonal
Alias	MAPT; MTAPT; MTBT1; Neurofibrillary tangle protein; PHF-tau
Product Type	Polyclonal Antibody
Immunogen Species	Homo sapiens (Human)
Target Names	MAPT

Image



Western blot analysis of extracts from mouse brain tissue using Tau(Phospho-Ser235) Antibody and the same antibody preincubated with blocking peptide.

Product Modify	Phospho-Ser235
-----------------------	----------------