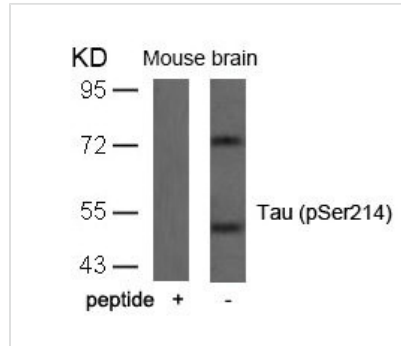




Phospho-MAPT (Ser214) Antibody

Product Code	CSB-PA135965
Storage	Upon receipt, store at -20°C or -80°C. Avoid repeated freeze.
Uniprot No.	P10636
Immunogen	Peptide sequence around phosphorylation site of serine 214 (T-P-S(p)-L-P) derived from Human Tau.
Raised In	Rabbit
Species Reactivity	Human, Mouse, Rat
Specificity	The antibody detects endogenous level of Tau only when phosphorylated at serine 214.
Tested Applications	ELISA, WB; WB: 1:500-1:1000
Relevance	<p>Promotes microtubule assembly and stability, and might be involved in the establishment and maintenance of neuronal polarity. The C-terminus binds axonal microtubules while the N-terminus binds neural plasma membrane components, suggesting that tau functions as a linker protein between both. Axonal polarity is predetermined by tau localization (in the neuronal cell) in the domain of the cell body defined by the centrosome. The short isoforms allow plasticity of the cytoskeleton whereas the longer isoforms may preferentially play a role in its stabilization.</p> <p>Smet C, et al. (2005) FEBS Lett; 579(19): 4159-64. Puig B, et al. (2005) Acta Neuropathol (Berl). Gvtz J, et al. (2001) Science; 293(5534): 1491-5. Illenberger S, et al. (1998) Mol Biol Cell; 9(6): 1495-512.</p>
Form	Supplied at 1.0mg/mL in phosphate buffered saline (without Mg ²⁺ and Ca ²⁺), pH 7.4, 150mM NaCl, 0.02% sodium azide and 50% glycerol.
Purification Method	Antibodies were produced by immunizing rabbits with synthetic phosphopeptide and KLH conjugates. Antibodies were purified by affinity-chromatography using epitope-specific phosphopeptide. Non-phospho specific antibodies were removed by chromatography use
Clonality	Polyclonal
Alias	MAPT; MTAPT; MTBT1; Neurofibrillary tangle protein; PHF-tau
Product Type	Polyclonal Antibody
Immunogen Species	Homo sapiens (Human)
Target Names	MAPT
Image	



Western blot analysis of extracts from mouse brain tissue using Tau(Phospho-Ser214) Antibody and the same antibody preincubated with blocking peptide.

Product Modify

Phospho-Ser214