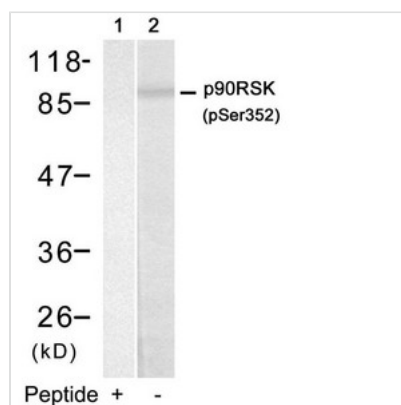




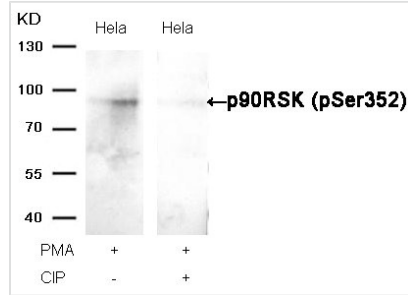
# Phospho-RPS6KA1 (Ser352) Antibody

<b>Product Code</b>	CSB-PA212336
<b>Storage</b>	Upon receipt, store at -20°C or -80°C. Avoid repeated freeze.
<b>Uniprot No.</b>	Q15418
<b>Immunogen</b>	Peptide sequence around phosphorylation site of serine 352 (R-D-S(p)-P-G) derived from Human p90RSK.
<b>Raised In</b>	Rabbit
<b>Species Reactivity</b>	Human,Mouse,Rat
<b>Specificity</b>	The antibody detects endogenous level of p90RSK only when phosphorylated at serine 352.
<b>Tested Applications</b>	ELISA,WB;WB:1:500-1:1000
<b>Form</b>	Supplied at 1.0mg/mL in phosphate buffered saline (without Mg <sup>2+</sup> and Ca <sup>2+</sup> ), pH 7.4, 150mM NaCl, 0.02% sodium azide and 50% glycerol.
<b>Purification Method</b>	Antibodies were produced by immunizing rabbits with synthetic phosphopeptide and KLH conjugates. Antibodies were purified by affinity-chromatography using epitope-specific phosphopeptide. Non-phospho specific antibodies were removed by chromatography usi
<b>Clonality</b>	Polyclonal
<b>Alias</b>	KS6A1; MAPKAP-K1a; RPS6KA1; RSK-1; RSK1
<b>Product Type</b>	Polyclonal Antibody
<b>Immunogen Species</b>	Homo sapiens (Human)
<b>Target Names</b>	RPS6KA1

## Image



Western blot analysis of extracts from HUVEC cells using p90RSK(Phospho-Ser352) Antibody(Lane 2) and the same antibody preincubated with blocking peptide(Lane1).



Western blot analysis of extracts from HeLa cells, treated with PMA or calf intestinal phosphatase (CIP), using p90RSK (Phospho-Ser352) Antibody.

**Product Modify**

Phospho-Ser352

**Usage**

For Research Use Only. Not for use in diagnostic or therapeutic procedures.