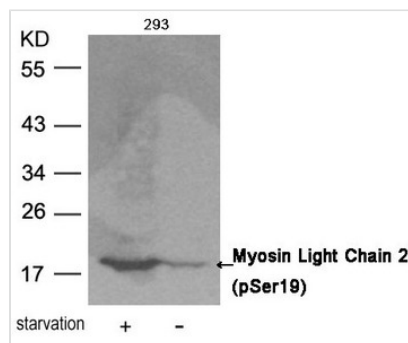




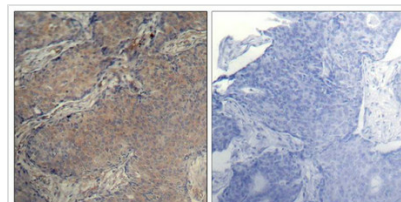
Phospho-MYL9 (Ser19) Antibody

Product Code	CSB-PA186288
Storage	Upon receipt, store at -20°C or -80°C. Avoid repeated freeze.
Uniprot No.	P24844
Immunogen	Peptide sequence around phosphorylation site of serine 19 (A-T-S(p)-N-V) derived from Human Myosin Light Chain 2.
Raised In	Rabbit
Species Reactivity	Human,Mouse,Rat
Specificity	The antibody detects endogenous level of Myosin Light Chain 2 only when phosphorylated at serine 19.
Tested Applications	ELISA,WB,IHC;WB:1:500-1:1000,IHC:1:50-1:100
Form	Supplied at 1.0mg/mL in phosphate buffered saline (without Mg ²⁺ and Ca ²⁺), pH 7.4, 150mM NaCl, 0.02% sodium azide and 50% glycerol.
Purification Method	Antibodies were produced by immunizing rabbits with synthetic phosphopeptide and KLH conjugates. Antibodies were purified by affinity-chromatography using epitope-specific phosphopeptide. Non-phospho specific antibodies were removed by chromatography
Clonality	Polyclonal
Alias	MLC-2a; MLC2a; MLRA; MYL7; MYLC2A
Product Type	Polyclonal Antibody
Immunogen Species	Homo sapiens (Human)
Target Names	MYL9

Image



Western blot analysis of extracts from 293 cells untreated or treated with starvation using Myosin Light Chain 2 (Phospho-Ser19) Antibody.



Immunohistochemical analysis of paraffin-embedded human breast carcinoma tissue using Myosin Light Chain 2 (Phospho-Ser19) Antibody (left) or the same antibody preincubated with blocking peptide (right).

**Product Modify**

Phospho-Ser19