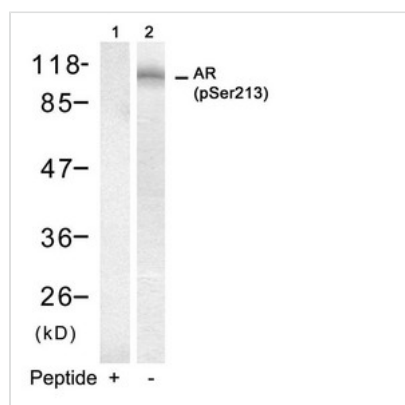




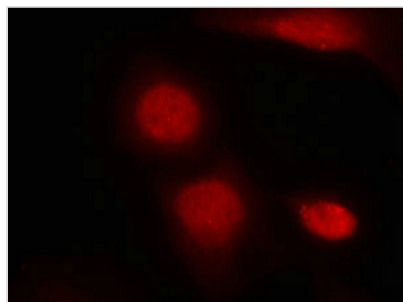
Phospho-AR (Ser213) Antibody

Product Code	CSB-PA097994
Storage	Upon receipt, store at -20°C or -80°C. Avoid repeated freeze.
Uniprot No.	P10275
Immunogen	Peptide sequence around phosphorylation site of serine 213 (E-A-S(p)-G-A) derived from Human Androgen Receptor.
Raised In	Rabbit
Species Reactivity	Human
Specificity	The antibody detects endogenous level of Androgen Receptor only when phosphorylated at serine 213.
Tested Applications	ELISA,WB,IF;WB:1:500-1:1000,IF:1:100-1:200
Form	Supplied at 1.0mg/mL in phosphate buffered saline (without Mg ²⁺ and Ca ²⁺), pH 7.4, 150mM NaCl, 0.02% sodium azide and 50% glycerol.
Purification Method	Antibodies were produced by immunizing rabbits with synthetic phosphopeptide and KLH conjugates. Antibodies were purified by affinity-chromatography using epitope-specific phosphopeptide. Non-phospho specific antibodies were removed by chromatography
Clonality	Polyclonal
Alias	ANDR; DHTR; AR
Product Type	Polyclonal Antibody
Immunogen Species	Homo sapiens (Human)
Target Names	AR

Image



Western blot analysis of extracts from DU145 cells using Androgen Receptor(Phospho-Ser213) Antibody(Lane 2) and the same antibody preincubated with blocking peptide(Lane1).



Immunofluorescence staining of methanol-fixed HeLa cells using Androgen Receptor(Phospho-Ser213) Antibody.

Product Modify

Phospho-Ser213