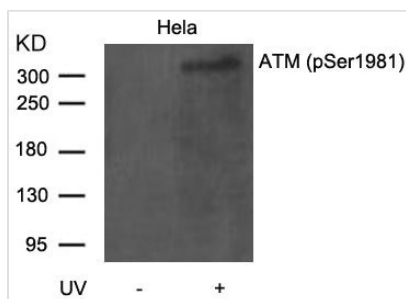




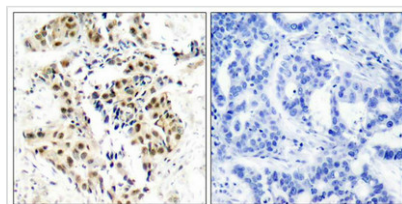
Phospho-ATM (Ser1981) Antibody

Product Code	CSB-PA188639
Storage	Upon receipt, store at -20°C or -80°C. Avoid repeated freeze.
Uniprot No.	Q13315
Immunogen	Peptide sequence around phosphorylation site of serine 1981 (E-G-S(p)-Q-S) derived from Human ATM.
Raised In	Rabbit
Species Reactivity	Human,Mouse
Specificity	The antibody detects endogenous level of ATM only when phosphorylated at serine 1981.
Tested Applications	ELISA,WB,IHC;WB:1:500-1:1000,IHC:1:50-1:100
Form	Supplied at 1.0mg/mL in phosphate buffered saline (without Mg ²⁺ and Ca ²⁺), pH 7.4, 150mM NaCl, 0.02% sodium azide and 50% glycerol.
Purification Method	Antibodies were produced by immunizing rabbits with synthetic phosphopeptide and KLH conjugates. Antibodies were purified by affinity-chromatography using epitope-specific phosphopeptide. Non-phospho specific antibodies were removed by chromatography
Clonality	Polyclonal
Alias	Ataxia telangiectasia mutated homolog; Ataxia telangiectasia mutated; kinase ATM
Product Type	Polyclonal Antibody
Immunogen Species	Homo sapiens (Human)
Target Names	ATM

Image



Western blot analysis of extracts from HeLa cells untreated or treated with UV using ATM(Phospho-Ser1981) Antibody



Immunohistochemical analysis of paraffin-embedded human breast carcinoma tissue using ATM(Phospho-Ser1981) Antibody(left) or the same antibody preincubated with blocking peptide(right).



Product Modify

Phospho-Ser1981

Usage

For Research Use Only. Not for use in diagnostic or therapeutic procedures.