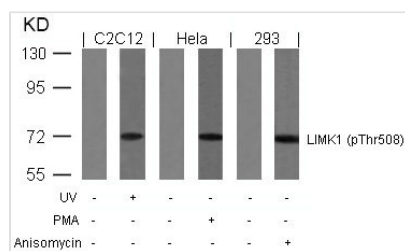




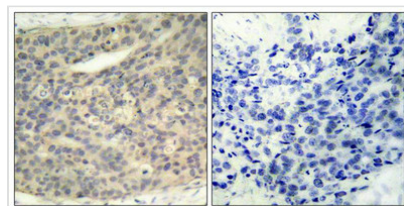
# Phospho-LIMK1 (Thr508) Antibody

<b>Product Code</b>	CSB-PA697195
<b>Storage</b>	Upon receipt, store at -20°C or -80°C. Avoid repeated freeze.
<b>Uniprot No.</b>	P53667
<b>Immunogen</b>	Peptide sequence around phosphorylation site of threonine 508 (R-Y-T(p)-V-V) derived from Human LIMK1.
<b>Raised In</b>	Rabbit
<b>Species Reactivity</b>	Human,Mouse,Rat
<b>Specificity</b>	The antibody detects endogenous level of LIMK1 only when phosphorylated at threonine 508.
<b>Tested Applications</b>	ELISA,WB,IHC,IF;WB:1:500-1:1000,IHC:1:50-1:100,IF:1:100-1:200
<b>Form</b>	Supplied at 1.0mg/mL in phosphate buffered saline (without Mg <sup>2+</sup> and Ca <sup>2+</sup> ), pH 7.4, 150mM NaCl, 0.02% sodium azide and 50% glycerol.
<b>Purification Method</b>	Antibodies were produced by immunizing rabbits with synthetic phosphopeptide and KLH conjugates. Antibodies were purified by affinity-chromatography using epitope-specific phosphopeptide. Non-phospho specific antibodies were removed by chromatography using
<b>Clonality</b>	Polyclonal
<b>Alias</b>	LIMK-1; kinase LIMK1;
<b>Product Type</b>	Polyclonal Antibody
<b>Immunogen Species</b>	Homo sapiens (Human)
<b>Target Names</b>	LIMK1

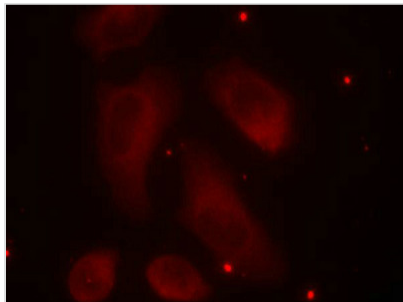
## Image



Western blot analysis of extracts from UV-treated C2C12, PMA-treated HeLa and anisomycin-treated 293 cells using LIMK1(Phospho-Thr508) Antibody.



Immunohistochemical analysis of paraffin-embedded human breast carcinoma tissue using LIMK1(Phospho-Thr508) Antibody (left) or the same antibody preincubated with blocking peptide (right).



Immunofluorescence staining of methanol-fixed HeLa cells using LIMK1(Phospho-Thr508) Antibody.

---

**Product Modify****Phospho-Thr508**