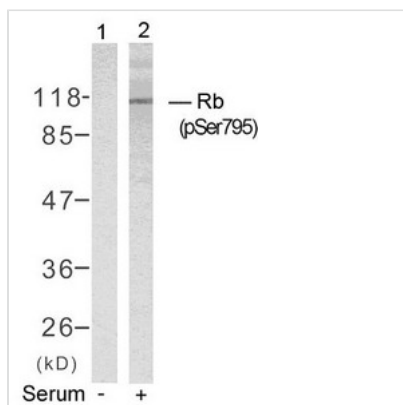




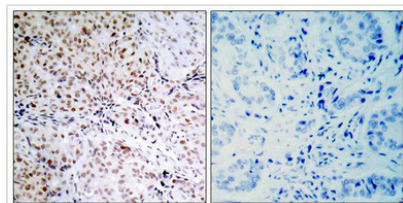
Phospho-RB1 (Ser795) Antibody

Product Code	CSB-PA201739
Storage	Upon receipt, store at -20°C or -80°C. Avoid repeated freeze.
Uniprot No.	P06400
Immunogen	Peptide sequence around phosphorylation site of serine 795 (P-S-S(p)-P-L) derived from Human Rb.
Raised In	Rabbit
Species Reactivity	Human,Mouse,Rat
Specificity	The antibody detects endogenous level of Rb only when phosphorylated at serine 795.
Tested Applications	ELISA,WB,IHC,IF;WB:1:500-1:1000,IHC:1:50-1:100,IF:1:100-1:200
Form	Supplied at 1.0mg/mL in phosphate buffered saline (without Mg ²⁺ and Ca ²⁺), pH 7.4, 150mM NaCl, 0.02% sodium azide and 50% glycerol.
Purification Method	Antibodies were produced by immunizing rabbits with synthetic phosphopeptide and KLH conjugates. Antibodies were purified by affinity-chromatography using epitope-specific phosphopeptide. Non-phospho specific antibodies were removed by chromatography usi
Clonality	Polyclonal
Alias	P105-RB; PP105; PP110; RB-1; RB1
Product Type	Polyclonal Antibody
Immunogen Species	Homo sapiens (Human)
Target Names	RB1

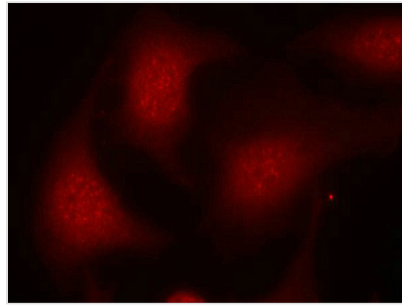
Image



Western blot analysis of extracts from K562 cells untreated(lane 1) or treated with serum(lane 2) using Rb(Phospho-Ser795) Antibody.



Immunohistochemical analysis of paraffin-embedded human breast carcinoma tissue using Rb(Phospho-Ser795) Antibody(left) or the same antibody preincubated with blocking peptide(right).



Immunofluorescence staining of methanol-fixed HeLa cells using Rb(Phospho-Ser795) Antibody.

Product Modify

Phospho-Ser795

Usage

For Research Use Only. Not for use in diagnostic or therapeutic procedures.