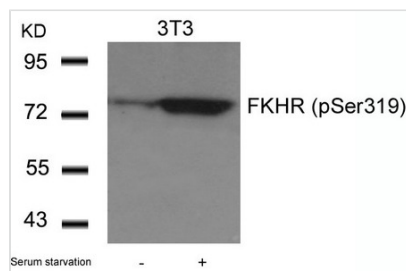




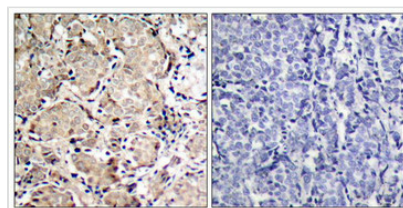
Phospho-FOXO1 (Ser319) Antibody

Product Code	CSB-PA284263
Storage	Upon receipt, store at -20°C or -80°C. Avoid repeated freeze.
Uniprot No.	Q12778
Immunogen	Peptide sequence around phosphorylation site of serine 319 (T-S-S(p)-N-A) derived from Human FKHR/FOXO1A.
Raised In	Rabbit
Species Reactivity	Human,Mouse,Rat
Specificity	The antibody detects endogenous level of FKHR only when phosphorylated at serine 319.
Tested Applications	ELISA,WB,IHC,IF;WB:1:500-1:1000,IHC:1:50-1:100,IF:1:100-1:200
Form	Supplied at 1.0mg/mL in phosphate buffered saline (without Mg ²⁺ and Ca ²⁺), pH 7.4, 150mM NaCl, 0.02% sodium azide and 50% glycerol.
Purification Method	Antibodies were produced by immunizing rabbits with synthetic phosphopeptide and KLH conjugates. Antibodies were purified by affinity-chromatography using epitope-specific phosphopeptide. Non-phospho specific antibodies were removed by chromatography
Clonality	Polyclonal
Alias	FOXO1
Product Type	Polyclonal Antibody
Immunogen Species	Homo sapiens (Human)
Target Names	FOXO1

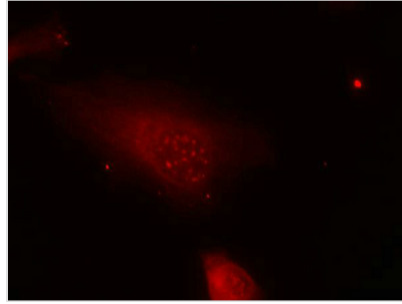
Image



Western blot analysis of extracts from 3T3 cells untreated or treated with serum starvation using FKHR(Phospho-Ser319) Antibody.



Immunohistochemical analysis of paraffin-embedded human breast carcinoma tissue using FKHR(Phospho-Ser319) Antibody(left) or the same antibody preincubated with blocking peptide(right).



Immunofluorescence staining of methanol-fixed HeLa cells using FKHR(Phospho-Ser319) Antibody.

Product Modify

Phospho-Ser319

Usage

For Research Use Only. Not for use in diagnostic or therapeutic procedures.