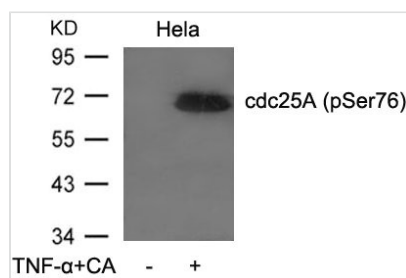




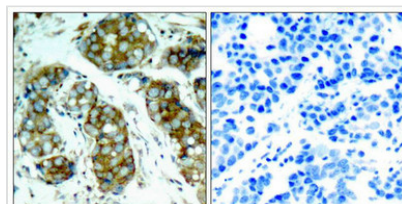
Phospho-CDC25A (Ser76) Antibody

Product Code	CSB-PA236400
Storage	Upon receipt, store at -20°C or -80°C. Avoid repeated freeze.
Uniprot No.	P30304
Immunogen	Peptide sequence around phosphorylation site of serine 76 (M-G-S(p)-S-E) derived from Human cdc25A.
Raised In	Rabbit
Species Reactivity	Human,Mouse,Rat
Specificity	The antibody detects endogenous level of cdc25A only when phosphorylated at serine 76.
Tested Applications	ELISA,WB,IHC;WB:1:500-1:1000,IHC:1:50-1:100
Form	Supplied at 1.0mg/mL in phosphate buffered saline (without Mg ²⁺ and Ca ²⁺), pH 7.4, 150mM NaCl, 0.02% sodium azide and 50% glycerol.
Purification Method	Antibodies were produced by immunizing rabbits with synthetic phosphopeptide and KLH conjugates. Antibodies were purified by affinity-chromatography using epitope-specific phosphopeptide. Non-phospho specific antibodies were removed by chromatography
Clonality	Polyclonal
Alias	CDC25M3; MPIP1;
Product Type	Polyclonal Antibody
Immunogen Species	Homo sapiens (Human)
Target Names	CDC25A

Image



Western blot analysis of extracts from HeLa cells untreated or treated with TNF-α and CA using cdc25A(Phospho-Ser76) Antibody.



Immunohistochemical analysis of paraffin-embedded human breast carcinoma tissue using cdc25A(Phospho-Ser76) Antibody(left) or the same antibody preincubated with blocking peptide(right).

Product Modify Phospho-Ser76