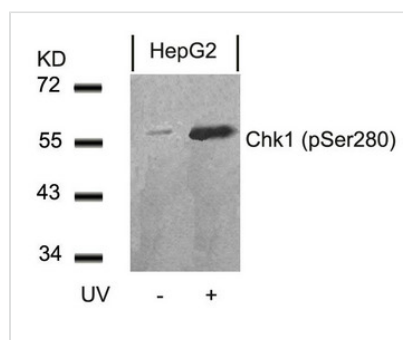




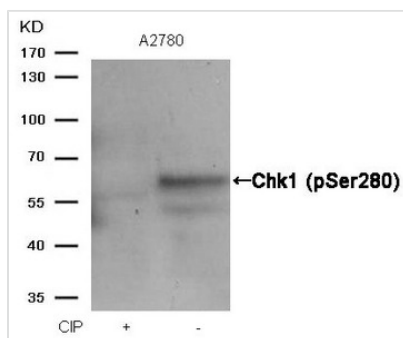
Phospho-CHEK1 (Ser280) Antibody

Product Code	CSB-PA114140
Storage	Upon receipt, store at -20°C or -80°C. Avoid repeated freeze.
Uniprot No.	O14757
Immunogen	Peptide sequence around phosphorylation site of serine 280 (V-T-S(p)-G-G) derived from Human Chk1.
Raised In	Rabbit
Species Reactivity	Human
Specificity	The antibody detects endogenous level of Chk1 only when phosphorylated at serine 280.
Tested Applications	ELISA, WB; WB: 1:500-1:1000
Form	Supplied at 1.0mg/mL in phosphate buffered saline (without Mg ²⁺ and Ca ²⁺), pH 7.4, 150mM NaCl, 0.02% sodium azide and 50% glycerol.
Purification Method	Antibodies were produced by immunizing rabbits with synthetic phosphopeptide and KLH conjugates. Antibodies were purified by affinity-chromatography using epitope-specific phosphopeptide. Non-phospho specific antibodies were removed by chromatography using
Clonality	Polyclonal
Alias	CHEK1; Chk1;
Product Type	Polyclonal Antibody
Immunogen Species	Homo sapiens (Human)
Target Names	CHEK1

Image



Western blot analysis of extracts from HepG2 cells untreated or treated with UV using Chk1(Phospho-Ser280) Antibody.



Western blot analysis of extracts from A2780 cells, treated with calf intestinal phosphatase (CIP), using Chk1 (Phospho-Ser280) Antibody.

Product Modify

Phospho-Ser280