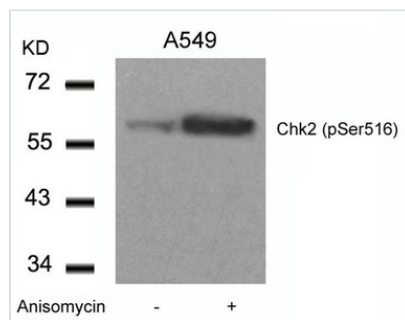




# Phospho-CHEK2 (Ser516) Antibody

|                            |  |
|----------------------------|--|
| <b>Product Code</b>        | CSB-PA440208   |
| <b>Storage</b>             | Upon receipt, store at -20°C or -80°C. Avoid repeated freeze.  |
| <b>Uniprot No.</b>         | O96017   |
| <b>Immunogen</b>           | Peptide sequence around phosphorylation site of serine 516 (Q-P-S(p)-T-S) derived from Human Chk2.   |
| <b>Raised In</b>           | Rabbit   |
| <b>Species Reactivity</b>  | Human  |
| <b>Specificity</b>         | The antibody detects endogenous level of Chk2 only when phosphorylated at serine 516.  |
| <b>Tested Applications</b> | ELISA,WB;WB:1:500-1:1000   |
| <b>Form</b>                | Supplied at 1.0mg/mL in phosphate buffered saline (without Mg <sup>2+</sup> and Ca <sup>2+</sup> ), pH 7.4, 150mM NaCl, 0.02% sodium azide and 50% glycerol.   |
| <b>Purification Method</b> | Antibodies were produced by immunizing rabbits with synthetic phosphopeptide and KLH conjugates. Antibodies were purified by affinity-chromatography using epitope-specific phosphopeptide. Non-phospho specific antibodies were removed by chromatography |
| <b>Clonality</b>           | Polyclonal   |
| <b>Alias</b>               | CHEK2; Cds1;   |
| <b>Product Type</b>        | Polyclonal Antibody  |
| <b>Immunogen Species</b>   | Homo sapiens (Human)   |
| <b>Target Names</b>        | CHEK2  |

## Image



Western blot analysis of extracts from A549 cells untreated or treated with Anisomycin using Chk2(Phospho-Ser516) Antibody.

|                       |   |
|-----------------------|---|
| <b>Product Modify</b> | Phospho-Ser516  |
| <b>Usage</b>          | For Research Use Only. Not for use in diagnostic or therapeutic procedures. |