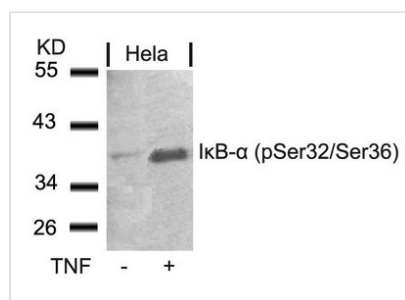




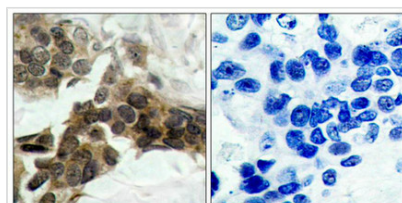
Phospho-NFKBIA (Ser32/Ser36) Antibody

Product Code	CSB-PA093630
Storage	Upon receipt, store at -20°C or -80°C. Avoid repeated freeze.
Uniprot No.	P25963
Immunogen	Peptide sequence around phosphorylation site of serine 32/36 (H-D-S(p)-G-L-D-S(p)-M-K) derived from Human IκB-α.
Raised In	Rabbit
Species Reactivity	Human,Mouse,Rat
Specificity	The antibody detects endogenous level of IκB-α only when phosphorylated at serine 32/36.
Tested Applications	ELISA,WB,IHC,IF;WB:1:500-1:1000,IHC:1:50-1:100,IF:1:100-1:200
Form	Supplied at 1.0mg/mL in phosphate buffered saline (without Mg ²⁺ and Ca ²⁺), pH 7.4, 150mM NaCl, 0.02% sodium azide and 50% glycerol.
Purification Method	Antibodies were produced by immunizing rabbits with synthetic phosphopeptide and KLH conjugates. Antibodies were purified by affinity-chromatography using epitope-specific phosphopeptide. Non-phospho specific antibodies were removed by chromatography
Clonality	Polyclonal
Alias	I-kappa-B-alpha; IKBA; NF-kappaB inhibitor alpha; NFKBI; NFKBIA
Product Type	Polyclonal Antibody
Immunogen Species	Homo sapiens (Human)
Target Names	NFKBIA

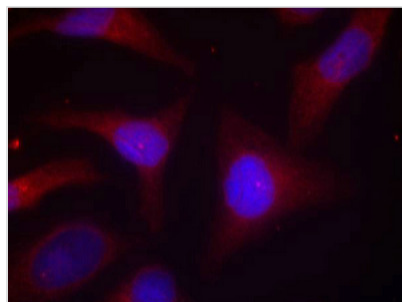
Image



Western blot analysis of extracts from HeLa cells untreated or treated with TNF using IκB-α(Phospho-Ser32/Ser36) Antibody.



Immunohistochemical analysis of paraffin-embedded human breast carcinoma tissue using IκB-α(Phospho-Ser32/Ser36) Antibody(left) or the same antibody preincubated with blocking peptide(right).



Immunofluorescence staining of methanol-fixed HeLa cells using IκB-α(Phospho-Ser32/Ser36) Antibody.

Product Modify**Phospho-Ser32/Ser36**