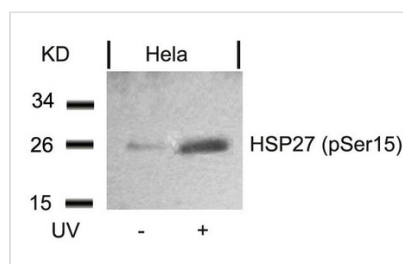




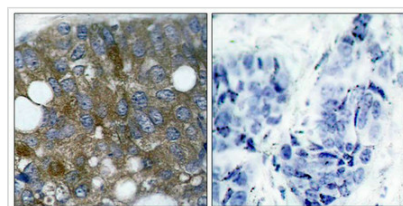
Phospho-HSPB1 (Ser15) Antibody

Product Code	CSB-PA072898
Storage	Upon receipt, store at -20°C or -80°C. Avoid repeated freeze.
Uniprot No.	P04792
Immunogen	Peptide sequence around phosphorylation site of serine15 (G-P-S(p)-W-D) derived from Human HSP27.
Raised In	Rabbit
Species Reactivity	Human
Specificity	The antibody detects endogenous level of HSP27 only when phosphorylated at serine 15.
Tested Applications	ELISA, WB, IHC, IF; WB: 1:500-1:1000, IHC: 1:50-1:100, IF: 1:100-1:200
Form	Supplied at 1.0mg/mL in phosphate buffered saline (without Mg ²⁺ and Ca ²⁺), pH 7.4, 150mM NaCl, 0.02% sodium azide and 50% glycerol.
Purification Method	Antibodies were produced by immunizing rabbits with synthetic phosphopeptide and KLH conjugates. Antibodies were purified by affinity-chromatography using epitope-specific phosphopeptide. Non-phospho specific antibodies were removed by chromatography using
Clonality	Polyclonal
Alias	CMT2F, HMN2B, HSP27, HSP28, Hsp25
Product Type	Polyclonal Antibody
Immunogen Species	Homo sapiens (Human)
Target Names	HSPB1

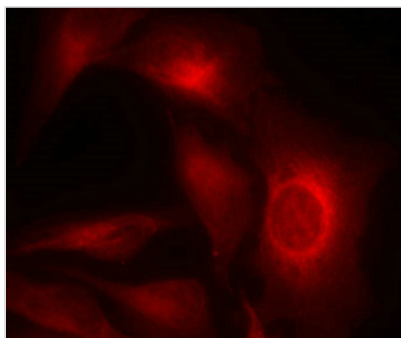
Image



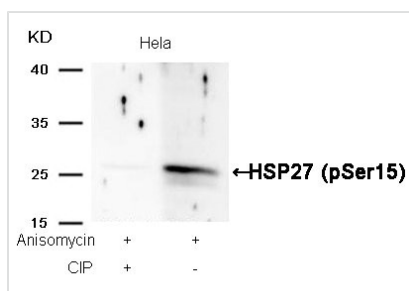
Western blot analysis of extracts from HeLa cells untreated or treated with UV using HSP27(Phospho-Ser15) Antibody.



Immunohistochemical analysis of paraffin-embedded human breast carcinoma tissue using HSP27(Phospho-Ser15) Antibody(left) or the same antibody preincubated with blocking peptide(right).



Immunofluorescence staining of methanol-fixed HeLa cells showing cytoplasmic staining using HSP27(Phospho-Ser15) Antibody.



Western blot analysis of extracts from HeLa cells, treated with Anisomycin or calf intestinal phosphatase (CIP), using HSP27 (Phospho-Ser15) Antibody.

Product Modify

Phospho-Ser15