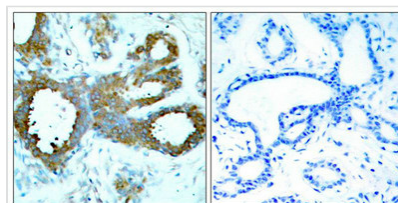




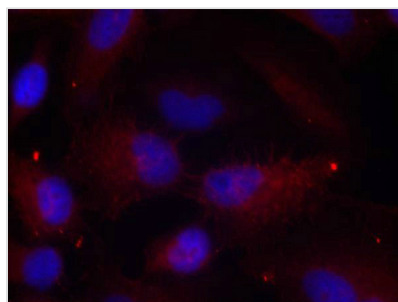
Phospho-PAK1/PAK2/PAK3 (Thr423/Thr402/Thr421) Antibody

Product Code	CSB-PA069102
Storage	Upon receipt, store at -20°C or -80°C. Avoid repeated freeze.
Uniprot No.	Q13153
Immunogen	Peptide sequence around phosphorylation site of threonine 423 /402/421 (R-S-T(p)-M-V) derived from Human PAK1/PAK2/PAK3.
Raised In	Rabbit
Species Reactivity	Human,Mouse,Rat
Specificity	The Antibody detects endogenous level of PAK1/PAK2/PAK3 only when phosphorylated at threonine 423/402/421.
Tested Applications	ELISA,IHC,IF;IHC:1:50-1:100,IF:1:100-1:200
Form	Supplied at 1.0mg/mL in phosphate buffered saline (without Mg ²⁺ and Ca ²⁺), pH 7.4, 150mM NaCl, 0.02% sodium azide and 50% glycerol.
Purification Method	Antibodies were produced by immunizing rabbits with synthetic phosphopeptide and KLH conjugates. Antibodies were purified by affinity-chromatography using epitope-specific phosphopeptide. Non-phospho specific antibodies were removed by chromatography usi
Clonality	Polyclonal
Alias	p21-activated kinase 1; PAK-1; p65-PAK; Alpha-PAK;
Product Type	Polyclonal Antibody
Immunogen Species	Homo sapiens (Human)
Target Names	PAK1/PAK2/PAK3

Image



Immunohistochemical analysis of paraffin-embedded human breast carcinoma tissue using PAK1/PAK2/PAK3(Phospho-Thr423/Thr402/Thr421) Antibody(left) or the same antibody preincubated with blocking peptide(right).



Immunofluorescence staining of methanol-fixed HeLa cells using PAK1/PAK2/PAK3(Phospho-Thr423/Thr402/Thr421) Antibody.

**Product Modify**

Phospho-Thr423/Thr402/Thr421