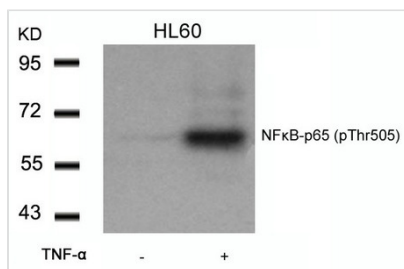




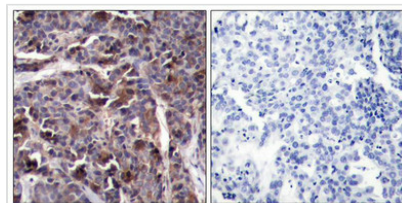
# Phospho-RELA (Thr505) Antibody

<b>Product Code</b>	CSB-PA068574
<b>Storage</b>	Upon receipt, store at -20°C or -80°C. Avoid repeated freeze.
<b>Uniprot No.</b>	Q04206
<b>Immunogen</b>	Peptide sequence around phosphorylation site of threonine 505 (L-V-T(p)-G-A) derived from Human NFκB-p65.
<b>Raised In</b>	Rabbit
<b>Species Reactivity</b>	Human,Mouse,Rat
<b>Specificity</b>	The antibody detects endogenous level of NFκB-p65 only when phosphorylated at Threonine 505.
<b>Tested Applications</b>	ELISA,WB,IHC;WB:1:500-1:1000,IHC:1:50-1:100
<b>Form</b>	Supplied at 1.0mg/mL in phosphate buffered saline (without Mg <sup>2+</sup> and Ca <sup>2+</sup> ), pH 7.4, 150mM NaCl, 0.02% sodium azide and 50% glycerol.
<b>Purification Method</b>	Antibodies were produced by immunizing rabbits with synthetic phosphopeptide and KLH conjugates. Antibodies were purified by affinity-chromatography using epitope-specific phosphopeptide. Non-phospho specific antibodies were removed by chromatography usi
<b>Clonality</b>	Polyclonal
<b>Alias</b>	NFKB3; RELA; TF65; Transcription factor p65; p65
<b>Product Type</b>	Polyclonal Antibody
<b>Immunogen Species</b>	Homo sapiens (Human)
<b>Target Names</b>	RELA

## Image



Western blot analysis of extracts from HL60 cells untreated or treated with TNF-α using NFκB-p65(Phospho-Thr505) Antibody.



Immunohistochemical analysis of paraffin-embedded human breast carcinoma tissue using NFκB-p65(Phospho-Thr505) Antibody(left) or the same antibody preincubated with blocking peptide(right).

<b>Product Modify</b>	Phospho-Thr505
<b>Usage</b>	For Research Use Only. Not for use in diagnostic or therapeutic procedures.