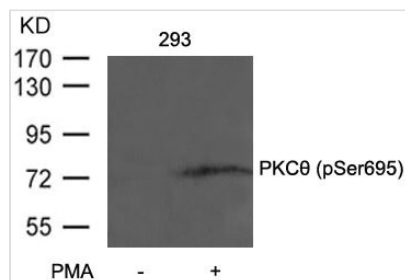




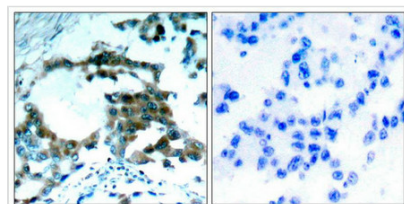
Phospho-PRKCQ (Ser695) Antibody

Product Code	CSB-PA160849
Storage	Upon receipt, store at -20°C or -80°C. Avoid repeated freeze.
Uniprot No.	Q04759
Immunogen	Peptide sequence around phosphorylation site of serine 695 (N-F-S(p)-F-M) derived from Human PKCth.
Raised In	Rabbit
Species Reactivity	Human,Mouse,Rat
Specificity	The antibody detects endogenous level of PKCth only when phosphorylated at serine 695.
Tested Applications	ELISA,WB,IHC;WB:1:500-1:1000,IHC:1:50-1:100
Form	Supplied at 1.0mg/mL in phosphate buffered saline (without Mg ²⁺ and Ca ²⁺), pH 7.4, 150mM NaCl, 0.02% sodium azide and 50% glycerol.
Purification Method	Antibodies were produced by immunizing rabbits with synthetic phosphopeptide and KLH conjugates. Antibodies were purified by affinity-chromatography using epitope-specific phosphopeptide. Non-phospho specific antibodies were removed by chromatography
Clonality	Polyclonal
Alias	KPCT; PKC-theta; PKCQ; PRKCQ; PRKCT
Product Type	Polyclonal Antibody
Immunogen Species	Homo sapiens (Human)
Target Names	PRKCQ

Image



Western blot analysis of extracts from 293 cells untreated or treated with PMA using PKCth(Phospho-Ser695) Antibody.



Immunohistochemical analysis of paraffin-embedded human lung carcinoma tissue using PKCth(Phospho-Ser695) Antibody(left) or the same antibody preincubated with blocking peptide(right).

Product Modify Phospho-Ser695



Usage

For Research Use Only. Not for use in diagnostic or therapeutic procedures.