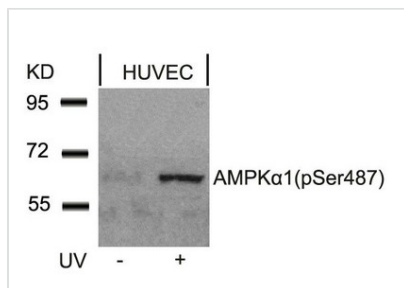




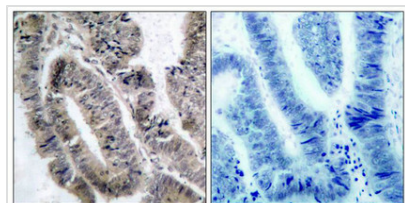
# Phospho-PRKAA1/PRKAA2 (Ser487) Antibody

<b>Product Code</b>	CSB-PA261465
<b>Storage</b>	Upon receipt, store at -20°C or -80°C. Avoid repeated freeze.
<b>Uniprot No.</b>	Q13131
<b>Immunogen</b>	Peptide sequence around phosphorylation site of serine 487 (S-G- SP-V-S) derived from Human AMPKα1.
<b>Raised In</b>	Rabbit
<b>Species Reactivity</b>	Human,Mouse,Rat
<b>Specificity</b>	The antibody detects endogenous level of AMPKα1 only when phosphorylated at serine 487.
<b>Tested Applications</b>	ELISA,WB,IHC,IF;WB:1:500-1:1000,IHC:1:50-1:100,IF:1:100-1:200
<b>Form</b>	Supplied at 1.0mg/mL in phosphate buffered saline (without Mg <sup>2+</sup> and Ca <sup>2+</sup> ), pH 7.4, 150mM NaCl, 0.02% sodium azide and 50% glycerol.
<b>Purification Method</b>	Antibodies were produced by immunizing rabbits with synthetic phosphopeptide and KLH conjugates. Antibodies were purified by affinity-chromatography using epitope-specific phosphopeptide. Non-phospho specific antibodies were removed by chromatography
<b>Clonality</b>	Polyclonal
<b>Alias</b>	AAPK1; AMPK alpha-1 chain; AMPK-α1; HMG-CoA redustase kinase; PRKAA1
<b>Product Type</b>	Polyclonal Antibody
<b>Immunogen Species</b>	Homo sapiens (Human)
<b>Target Names</b>	PRKAA1/PRKAA2

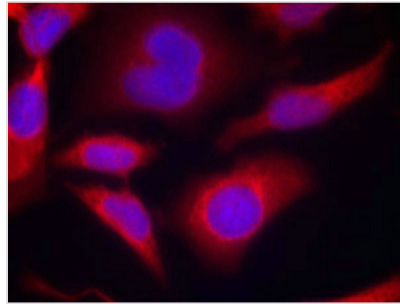
## Image



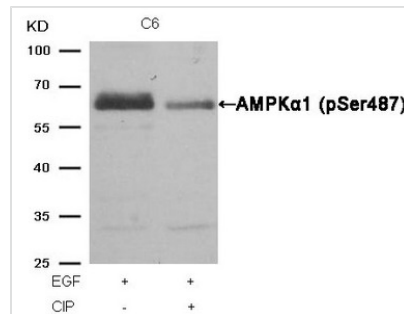
Western blot analysis of extracts from HUVEC cells untreated or treated with UV using AMPKα1 (Phospho-Ser487) Antibody.



Immunohistochemical analysis of paraffin-embedded human colon carcinoma tissue using AMPKα1 (Phospho-Ser487) Antibody(left) or the same antibody preincubated with blocking peptide(right).



Immunofluorescence staining of methanol-fixed HeLa cells using AMPKα1 (Phospho-Ser487) Antibody.



Western blot analysis of extracts from C6 cells, treated with EGF or calf intestinal phosphatase (CIP), using AMPKα1 (Phospho-Ser487) Antibody.

**Product Modify**

**Phospho-Ser487**