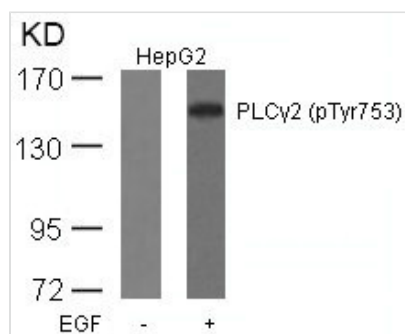




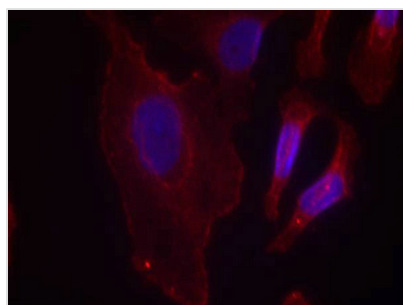
Phospho-PLCG2 (Tyr753) Antibody

Product Code	CSB-PA782484
Storage	Upon receipt, store at -20°C or -80°C. Avoid repeated freeze.
Uniprot No.	P16885
Immunogen	Peptide sequence around phosphorylation site of tyrosine 753 (S-L-Y(p)-D-V) derived from Human PLCg2.
Raised In	Rabbit
Species Reactivity	Human,Mouse,Rat
Specificity	The antibody detects endogenous level of PLCg2 only when phosphorylated at tyrosine 753.
Tested Applications	ELISA,WB,IF;WB:1:500-1:1000,IF:1:100-1:200
Form	Supplied at 1.0mg/mL in phosphate buffered saline (without Mg ²⁺ and Ca ²⁺), pH 7.4, 150mM NaCl, 0.02% sodium azide and 50% glycerol.
Purification Method	Antibodies were produced by immunizing rabbits with synthetic phosphopeptide and KLH conjugates. Antibodies were purified by affinity-chromatography using epitope-specific phosphopeptide. Non-phospho specific antibodies were removed by chromatography
Clonality	Polyclonal
Alias	PLC-IV; PLC-gamma2; Phospholipase C-gamma-2
Product Type	Polyclonal Antibody
Immunogen Species	Homo sapiens (Human)
Target Names	PLCG2

Image



Western blot analysis of extracts from HepG2 cells untreated or treated with EGF using PLCg2(Phospho-Tyr753) Antibody.



Immunofluorescence staining of methanol-fixed HeLa cells using PLCg2(Phospho-Tyr753) Antibody.



Product Modify**Phospho-Tyr753**