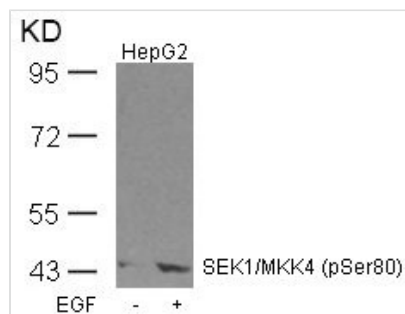




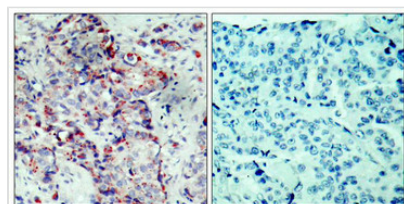
# Phospho-MAP2K4 (Ser80) Antibody

|                            |  |
|----------------------------|--|
| <b>Product Code</b>        | CSB-PA970074   |
| <b>Storage</b>             | Upon receipt, store at -20°C or -80°C. Avoid repeated freeze.  |
| <b>Uniprot No.</b>         | P45985   |
| <b>Immunogen</b>           | Peptide sequence around phosphorylation site of serine 80 (T-H-S(p)-I-E) derived from Human SEK1/MKK4.   |
| <b>Raised In</b>           | Rabbit   |
| <b>Species Reactivity</b>  | Human,Mouse,Rat  |
| <b>Specificity</b>         | The antibody detects endogenous level of SEK1/MKK4 only when phosphorylated at serine 80.  |
| <b>Tested Applications</b> | ELISA,WB,IHC,IF;WB:1:500-1:1000,IHC:1:50-1:100,IF:1:100-1:200  |
| <b>Form</b>                | Supplied at 1.0mg/mL in phosphate buffered saline (without Mg <sup>2+</sup> and Ca <sup>2+</sup> ), pH 7.4, 150mM NaCl, 0.02% sodium azide and 50% glycerol.   |
| <b>Purification Method</b> | Antibodies were produced by immunizing rabbits with synthetic phosphopeptide and KLH conjugates. Antibodies were purified by affinity-chromatography using epitope-specific phosphopeptide. Non-phospho specific antibodies were removed by chromatography usi |
| <b>Clonality</b>           | Polyclonal   |
| <b>Alias</b>               | JNKK; JNKK1; MAP2K4; MAPK/ERK kinase 4; MAPKK 4  |
| <b>Product Type</b>        | Polyclonal Antibody  |
| <b>Immunogen Species</b>   | Homo sapiens (Human)   |
| <b>Target Names</b>        | MAP2K4   |

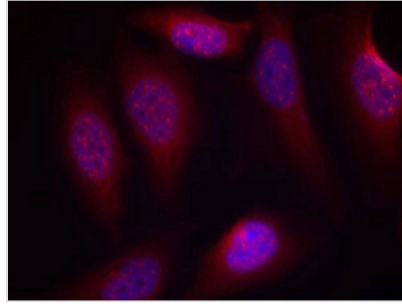
## Image



Western blot analysis of extracts from HepG2 cells untreated or treated with EGF using SEK1/MKK4(Phospho-Ser80) Antibody.



Immunohistochemical analysis of paraffin-embedded human breast carcinoma tissue using SEK1/MKK4(Phospho-Ser80) Antibody(left) or the same antibody preincubated with blocking peptide(right).



Immunofluorescence staining of methanol-fixed HeLa cells using SEK1/MKK4(Phospho-Ser80) Antibody.

---

**Product Modify**

Phospho-Ser80

---

**Usage**

For Research Use Only. Not for use in diagnostic or therapeutic procedures.