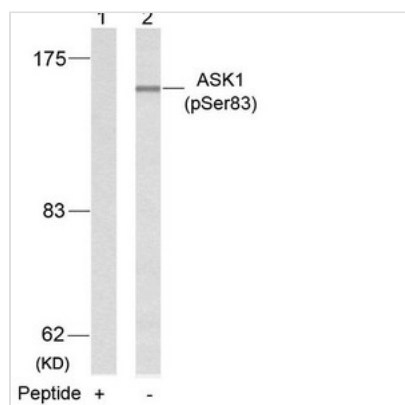




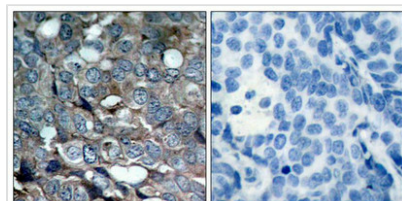
Phospho-MAP3K5 (Ser83) Antibody

Product Code	CSB-PA986695
Storage	Upon receipt, store at -20°C or -80°C. Avoid repeated freeze.
Uniprot No.	Q99683
Immunogen	Peptide sequence around phosphorylation site of serine 83 (G-S-S(p)-V-G) derived from Human ASK1.
Raised In	Rabbit
Species Reactivity	Human
Specificity	The antibody detects endogenous level of ASK1 only when phosphorylated at serine 83.
Tested Applications	ELISA, WB, IHC; WB: 1:500-1:1000, IHC: 1:50-1:100
Form	Supplied at 1.0mg/mL in phosphate buffered saline (without Mg ²⁺ and Ca ²⁺), pH 7.4, 150mM NaCl, 0.02% sodium azide and 50% glycerol.
Purification Method	Antibodies were produced by immunizing rabbits with synthetic phosphopeptide and KLH conjugates. Antibodies were purified by affinity-chromatography using epitope-specific phosphopeptide. Non-phospho specific antibodies were removed by chromatography
Clonality	Polyclonal
Alias	ASK-1; M3K5; MAP3K5; MAPK/ERK kinase kinase 5; MAPKKK5
Product Type	Polyclonal Antibody
Immunogen Species	Homo sapiens (Human)
Target Names	MAP3K5

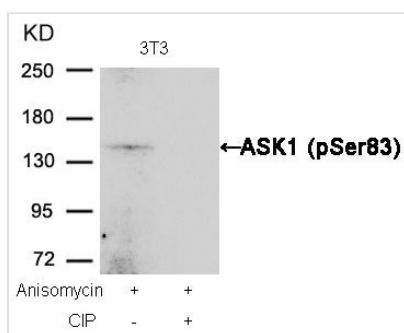
Image



Western blot analysis of extracts from K562 cells using ASK1(Phospho-Ser83) Antibody (Lane 2) and the same antibody preincubated with blocking peptide (Lane 1).



Immunohistochemical analysis of paraffin-embedded human breast carcinoma tissue using ASK1(Phospho-Ser83) Antibody (left) or the same antibody preincubated with blocking peptide (right).



Western blot analysis of extracts from 3T3 cells, treated with Anisomycin or calf intestinal phosphatase (CIP), using ASK1 (Phospho-Ser83) Antibody.

Product Modify

Phospho-Ser83