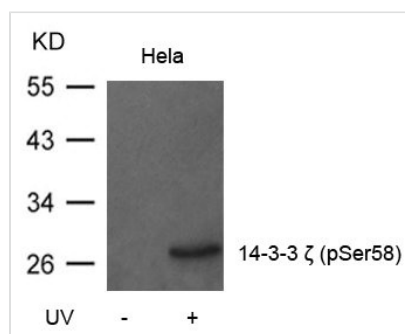




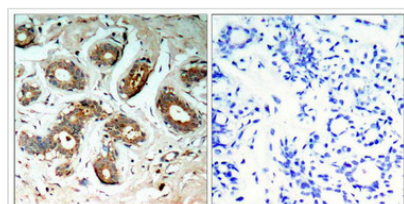
Phospho-YWHAZ (Ser58) Antibody

Product Code	CSB-PA887076
Storage	Upon receipt, store at -20°C or -80°C. Avoid repeated freeze.
Uniprot No.	P63104
Immunogen	Peptide sequence around phosphorylation site of serine 58 (R-S-S(p)-W-R) derived from Human 14-3-3 zeta.
Raised In	Rabbit
Species Reactivity	Human,Mouse,Rat
Specificity	The antibody detects endogenous level of 14-3-3 z only when phosphorylated at serine 58.
Tested Applications	ELISA,WB,IHC,IF;WB:1:500-1:1000,IHC:1:50-1:100,IF:1:100-1:200
Form	Supplied at 1.0mg/mL in phosphate buffered saline (without Mg ²⁺ and Ca ²⁺), pH 7.4, 150mM NaCl, 0.02% sodium azide and 50% glycerol.
Purification Method	Antibodies were produced by immunizing rabbits with synthetic phosphopeptide and KLH conjugates. Antibodies were purified by affinity-chromatography using epitope-specific phosphopeptide. Non-phospho specific antibodies were removed by chromatography usi
Clonality	Polyclonal
Alias	1433Z; 143Z; FAS; Factor activating exoenzyme S; KCIP-1
Product Type	Polyclonal Antibody
Immunogen Species	Homo sapiens (Human)
Target Names	YWHAZ

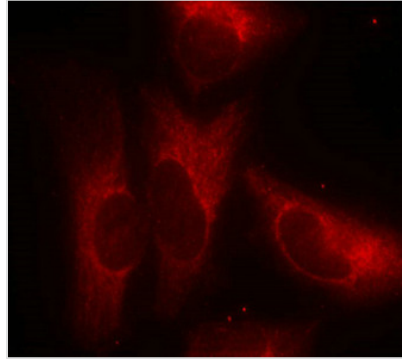
Image



Western blot analysis of extracts from HeLa cells untreated or treated with UV using 14-3-3z(Phospho-Ser58) Antibody.



Immunohistochemical analysis of paraffin-embedded human breast carcinoma tissue using 14-3-3z(Phospho-Ser58) Antibody(left) or the same antibody preincubated with blocking peptide(right).



Immunofluorescence staining of methanol-fixed HeLa cells using 14-3-3z(Phospho-Ser58) Antibody.

Product Modify

Phospho-Ser58

Usage

For Research Use Only. Not for use in diagnostic or therapeutic procedures.