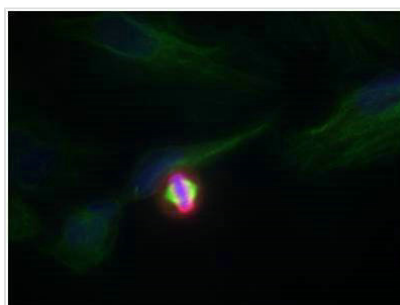




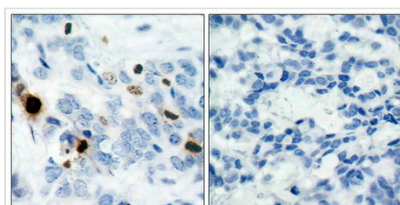
Phospho-Histone H3.1 (Ser10) Antibody

Product Code	CSB-PA289723
Storage	Upon receipt, store at -20°C or -80°C. Avoid repeated freeze.
Uniprot No.	P68431
Immunogen	Peptide sequence around phosphorylation site of serine 10 (R-K-S(p)-T-G) derived from Human Histone H3.1.
Raised In	Rabbit
Species Reactivity	Human,Mouse,Rat
Specificity	The antibody detects endogenous level of Histone H3.1 onlywhen phosphorylated at serine 10.
Tested Applications	ELISA,WB,IHC,IF;WB:1:500-1:1000,IHC:1:50-1:100,IF:1:100-1:200
Form	Supplied at 1.0mg/mL in phosphate buffered saline (without Mg2+ and Ca2+), pH 7.4, 150mM NaCl, 0.02% sodium azide and 50% glycerol.
Purification Method	Antibodies were produced by immunizing rabbits with synthetic phosphopeptide and KLH conjugates. Antibodies were purified by affinity-chromatography using epitope-specific phosphopeptide. Non-phospho specific antibodies were removed by chromatography usi
Clonality	Polyclonal
Alias	H3/b, H3FB
Product Type	Polyclonal Antibody
Immunogen Species	Homo sapiens (Human)
Target Names	HIST1H3A

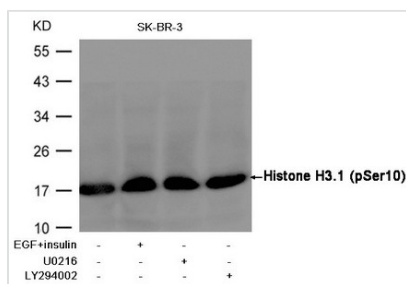
Image



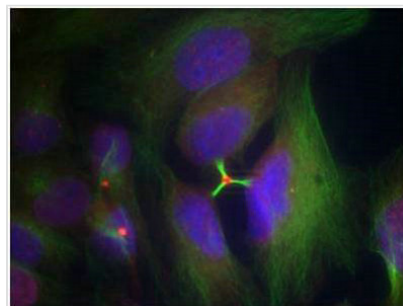
Immunofluorescence staining of methanol-fixed HeLa cells using Histone H3.1 (Phospho-Ser10) Antibody.



Immunohistochemical analysis of paraffin-embedded human breast carcinoma tissue using Histone H3.1(Phospho-Ser10) Antibody(left) or the same antibody preincubated with blocking peptide(right).



Western blot analysis of extracts from SK-BR-3 cells, treated with insulin and EGF, and pretreated with U0126 and LY294002 cells using Histone H3.1 (Phospho-Ser10) Antibody.



Immunofluorescence staining of methanol-fixed Hela cells using Histone H3.1 (Phospho-Ser10) Antibody.

Product Modify

Phospho-Ser10