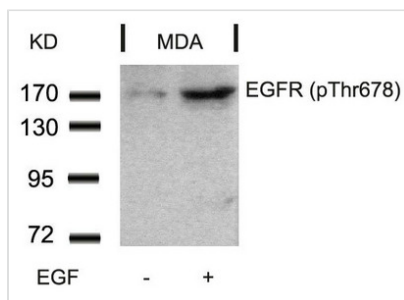




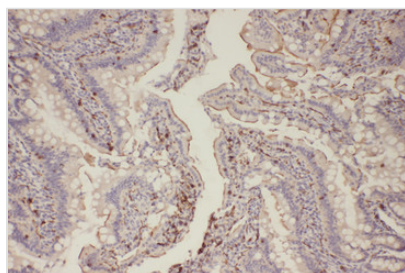
# Phospho-EGFR (Thr678) Antibody

<b>Product Code</b>	CSB-PA561961
<b>Storage</b>	Upon receipt, store at -20°C or -80°C. Avoid repeated freeze.
<b>Uniprot No.</b>	P00533
<b>Immunogen</b>	Peptide sequence around phosphorylation site of threonine 678 (K-R-T(p)-L-R) derived from Human EGFR.
<b>Raised In</b>	Rabbit
<b>Species Reactivity</b>	Human,Mouse,Rat
<b>Specificity</b>	The antibody detects endogenous level EGFR only when phosphorylated at threonine 678.
<b>Tested Applications</b>	ELISA,WB,IHC;WB:1:500-1:1000,IHC:1:50-1:100
<b>Form</b>	Supplied at 1.0mg/mL in phosphate buffered saline (without Mg <sup>2+</sup> and Ca <sup>2+</sup> ), pH 7.4, 150mM NaCl, 0.02% sodium azide and 50% glycerol.
<b>Purification Method</b>	Antibodies were produced by immunizing rabbits with synthetic phosphopeptide and KLH conjugates. Antibodies were purified by affinity-chromatography using epitope-specific phosphopeptide. Non-phospho specific antibodies were removed by chromatography using non-phosphopeptide.
<b>Clonality</b>	Polyclonal
<b>Alias</b>	ERBB1; Receptor protein-tyrosine kinase ErbB-1; kinase EGFR
<b>Product Type</b>	Polyclonal Antibody
<b>Immunogen Species</b>	Homo sapiens (Human)
<b>Target Names</b>	EGFR

## Image



Western blot analysis of extracts from MDA cells untreated or treated with EGF using EGFR(Phospho-Thr678) Antibody.



Immunohistochemical analysis of paraffin-embedded Rat Colorectal tissue using EGFR (Phospho-Thr678) Antibody.



---

**Product Modify**

Phospho-Thr678

---

**Usage**

For Research Use Only. Not for use in diagnostic or therapeutic procedures.