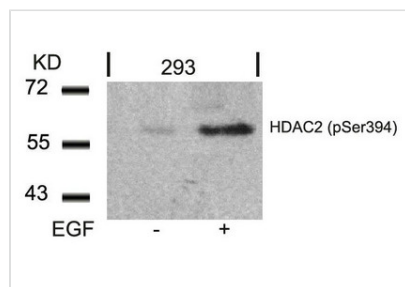




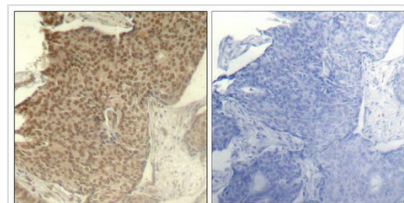
# Phospho-HDAC2 (Ser394) Antibody

<b>Product Code</b>	CSB-PA940326
<b>Storage</b>	Upon receipt, store at -20°C or -80°C. Avoid repeated freeze.
<b>Uniprot No.</b>	Q92769
<b>Immunogen</b>	Peptide sequence around phosphorylation site of serine 394 (E-D-S(p)-G-D) derived from Human HDAC2.
<b>Raised In</b>	Rabbit
<b>Species Reactivity</b>	Human,Mouse,Rat
<b>Specificity</b>	The antibody detects endogenous level of HDAC2 only when phosphorylated at serine 394.
<b>Tested Applications</b>	ELISA,WB,IHC,IF;WB:1:500-1:1000,IHC:1:50-1:100,IF:1:100-1:200
<b>Form</b>	Supplied at 1.0mg/mL in phosphate buffered saline (without Mg <sup>2+</sup> and Ca <sup>2+</sup> ), pH 7.4, 150mM NaCl, 0.02% sodium azide and 50% glycerol.
<b>Purification Method</b>	Antibodies were produced by immunizing rabbits with synthetic phosphopeptide and KLH conjugates. Antibodies were purified by affinity-chromatography using epitope-specific phosphopeptide. Non-phospho specific antibodies were removed by chromatography using
<b>Clonality</b>	Polyclonal
<b>Alias</b>	HD2
<b>Product Type</b>	Polyclonal Antibody
<b>Immunogen Species</b>	Homo sapiens (Human)
<b>Target Names</b>	HDAC2

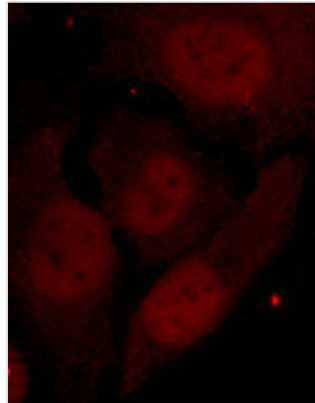
## Image



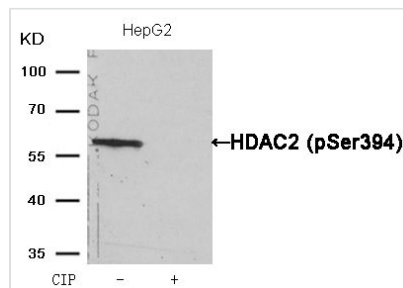
Western blot analysis of extracts from 293 cells untreated or treated with EGF using HDAC2(Phospho-Ser394) Antibody.



Immunohistochemical analysis of paraffin-embedded human breast carcinoma tissue using HDAC2(Phospho-Ser394) Antibody(left) or the same antibody preincubated with blocking peptide(right).



Immunofluorescence staining of methanol-fixed Hela cells showing nuclear staining using HDAC2(Phospho-Ser394) Antibody.



Western blot analysis of extracts from HepG2 cells, treated with calf intestinal phosphatase (CIP), using HDAC2 (Phospho-Ser394) Antibody.

**Product Modify**

**Phospho-Ser394**