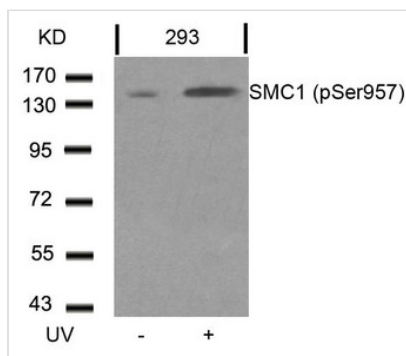




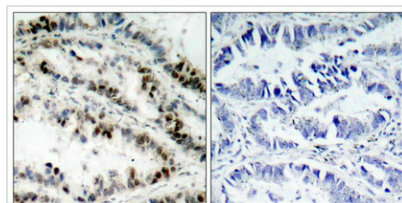
Phospho-SMC1A (Ser957) Antibody

Product Code	CSB-PA581416
Storage	Upon receipt, store at -20°C or -80°C. Avoid repeated freeze.
Uniprot No.	Q14683
Immunogen	Peptide sequence around phosphorylation site of serine 957 (G-S-S(p)-Q-G) derived from Human SMC1.
Raised In	Rabbit
Species Reactivity	Human,Mouse
Specificity	The antibody detects endogenous level of SMC1 only when phosphorylated at serine 957.
Tested Applications	ELISA,WB,IHC;WB:1:500-1:1000,IHC:1:50-1:100
Form	Supplied at 1.0mg/mL in phosphate buffered saline (without Mg ²⁺ and Ca ²⁺), pH 7.4, 150mM NaCl, 0.02% sodium azide and 50% glycerol.
Purification Method	Antibodies were produced by immunizing rabbits with synthetic phosphopeptide and KLH conjugates. Antibodies were purified by affinity-chromatography using epitope-specific phosphopeptide. Non-phospho specific antibodies were removed by chromatography usi
Clonality	Polyclonal
Alias	SM1A; SMC1A; SMC1L1; SMC1 alpha protein;
Product Type	Polyclonal Antibody
Immunogen Species	Homo sapiens (Human)
Target Names	SMC1A

Image



Western blot analysis of extracts from 293 cells untreated or treated with UV using SMC1(Phospho-Ser957) Antibody.



Immunohistochemical analysis of paraffin-embedded human lung carcinoma tissue using SMC1(Phospho-Ser957) Antibody(left) or the same antibody preincubated with blocking peptide(right).



Product Modify

Phospho-Ser957

Usage

For Research Use Only. Not for use in diagnostic or therapeutic procedures.