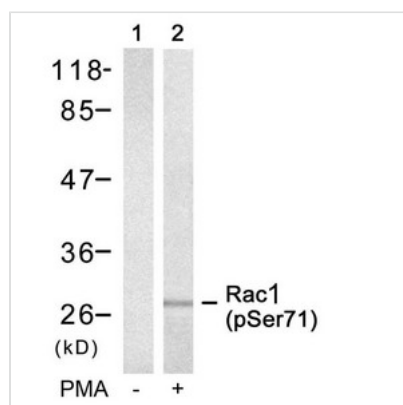




Phospho-RAC1 (Ser71) Antibody

Product Code	CSB-PA261382
Storage	Upon receipt, store at -20°C or -80°C. Avoid repeated freeze.
Uniprot No.	P63000
Immunogen	Peptide sequence around phosphorylation site of serine 71 (P-L-S(p)-Y-P) derived from Human Rac1.
Raised In	Rabbit
Species Reactivity	Human,Mouse,Rat
Specificity	The antibody detects endogenous level of Rac1 only when phosphorylated at serine 71.
Tested Applications	ELISA,WB;WB:1:500-1:1000
Form	Supplied at 1.0mg/mL in phosphate buffered saline (without Mg ²⁺ and Ca ²⁺), pH 7.4, 150mM NaCl, 0.02% sodium azide and 50% glycerol.
Purification Method	Antibodies were produced by immunizing rabbits with synthetic phosphopeptide and KLH conjugates. Antibodies were purified by affinity-chromatography using epitope-specific phosphopeptide. Non-phospho specific antibodies were removed by chromatography usi
Clonality	Polyclonal
Alias	Ras-like protein TC25; Ras-related C3 botulinum toxin substrate 1; p21-Rac1
Product Type	Polyclonal Antibody
Immunogen Species	Homo sapiens (Human)
Target Names	RAC1

Image



Western blot analysis of extracts from 293 cells untreated (lane 1) or treated with PMA (lane 2) using Rac1 (Phospho-Ser71) Antibody.

Product Modify	Phospho-Ser71
Usage	For Research Use Only. Not for use in diagnostic or therapeutic procedures.