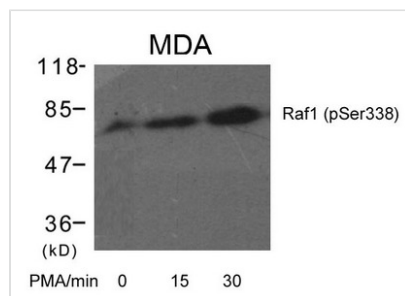




Phospho-RAF1 (Ser338) Antibody

Product Code	CSB-PA151308
Storage	Upon receipt, store at -20°C or -80°C. Avoid repeated freeze.
Uniprot No.	P04049
Immunogen	Peptide sequence around phosphorylation site of serine 338 (R-D-S(p)-S-Y) derived from Human RAF.
Raised In	Rabbit
Species Reactivity	Human,Mouse
Specificity	The antibody detects endogenous level of Raf1 only when phosphorylated at serine 338.
Tested Applications	ELISA,WB;WB:1:500-1:1000
Form	Supplied at 1.0mg/mL in phosphate buffered saline (without Mg ²⁺ and Ca ²⁺), pH 7.4, 150mM NaCl, 0.02% sodium azide and 50% glycerol.
Purification Method	Antibodies were produced by immunizing rabbits with synthetic phosphopeptide and KLH conjugates. Antibodies were purified by affinity-chromatography using epitope-specific phosphopeptide. Non-phospho specific antibodies were removed by chromatography usi
Clonality	Polyclonal
Alias	C-RAF; C-Raf; CRAF
Product Type	Polyclonal Antibody
Immunogen Species	Homo sapiens (Human)
Target Names	RAF1

Image



Western blot analysis of extracts from MDA cells untreated or treated with PMA for the indicated times using Raf1(Phospho-Ser338) Antibody.

Product Modify	Phospho-Ser338
Usage	For Research Use Only. Not for use in diagnostic or therapeutic procedures.