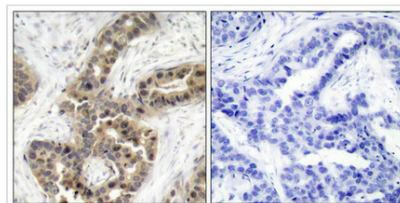




# Phospho-CDKN1A (Thr145) Antibody

<b>Product Code</b>	CSB-PA074462
<b>Storage</b>	Upon receipt, store at -20°C or -80°C. Avoid repeated freeze.
<b>Uniprot No.</b>	P38936
<b>Immunogen</b>	Peptide sequence around phosphorylation site of threonine 145 (R-Q-T(p)-S-M) derived from Human p21Cip1.
<b>Raised In</b>	Rabbit
<b>Species Reactivity</b>	Human
<b>Specificity</b>	The antibody detects endogenous level of p21Cip1 only when phosphorylated at threonine 145.
<b>Tested Applications</b>	ELISA,IHC;IHC:1:50-1:100
<b>Form</b>	Supplied at 1.0mg/mL in phosphate buffered saline (without Mg <sup>2+</sup> and Ca <sup>2+</sup> ), pH 7.4, 150mM NaCl, 0.02% sodium azide and 50% glycerol.
<b>Purification Method</b>	Antibodies were produced by immunizing rabbits with synthetic phosphopeptide and KLH conjugates. Antibodies were purified by affinity-chromatography using epitope-specific phosphopeptide. Non-phospho specific antibodies were removed by chromatography
<b>Clonality</b>	Polyclonal
<b>Alias</b>	CAP20; CDK-interacting protein 1; CDKN1; CDKN1A; CDN1A
<b>Product Type</b>	Polyclonal Antibody
<b>Immunogen Species</b>	Homo sapiens (Human)
<b>Target Names</b>	CDKN1A

## Image



Immunohistochemical analysis of paraffin-embedded human breast carcinoma tissue using p21Cip1(Phospho-Thr145) Antibody(left) or the same antibody preincubated with blocking peptide(right).

<b>Product Modify</b>	Phospho-Thr145
-----------------------	----------------