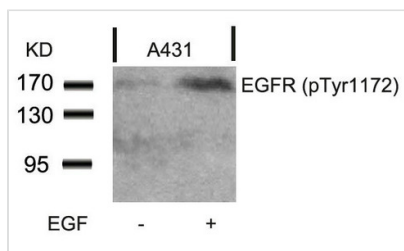




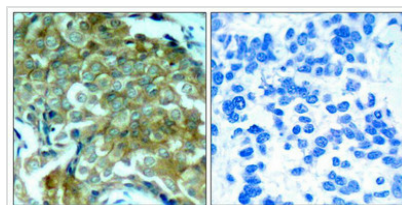
Phospho-EGFR (Tyr1172) Antibody

Product Code	CSB-PA277676
Storage	Upon receipt, store at -20°C or -80°C. Avoid repeated freeze.
Uniprot No.	P00533
Immunogen	Peptide sequence around phosphorylation site of tyrosine 1172 (P-D-Y(p)-Q-Q) derived from Human EGFR.
Raised In	Rabbit
Species Reactivity	Human,Mouse,Rat
Specificity	The antibody detects endogenous level EGFR only when phosphorylated at tyrosine 1172.
Tested Applications	ELISA,WB,IHC;WB:1:500-1:1000,IHC:1:50-1:100
Form	Supplied at 1.0mg/mL in phosphate buffered saline (without Mg ²⁺ and Ca ²⁺), pH 7.4, 150mM NaCl, 0.02% sodium azide and 50% glycerol.
Purification Method	Antibodies were produced by immunizing rabbits with synthetic phosphopeptide and KLH conjugates. Antibodies were purified by affinity-chromatography using epitope-specific phosphopeptide. Non-phospho specific antibodies were removed by chromatography using non-phosphopeptide.
Clonality	Polyclonal
Alias	ERBB1; Receptor protein-tyrosine kinase ErbB-1; kinase EGFR
Product Type	Polyclonal Antibody
Immunogen Species	Homo sapiens (Human)
Target Names	EGFR

Image



Western blot analysis of extracts from A431 cells untreated or treated with EGF using EGFR(Phospho-Tyr1172) Antibody.



Immunohistochemical analysis of paraffin-embedded human breast carcinoma tissue using EGFR(Phospho-Tyr1172) Antibody(left) or the same antibody preincubated with blocking peptide(right).

Product Modify	Phospho-Tyr1172
Usage	For Research Use Only. Not for use in diagnostic or therapeutic procedures.