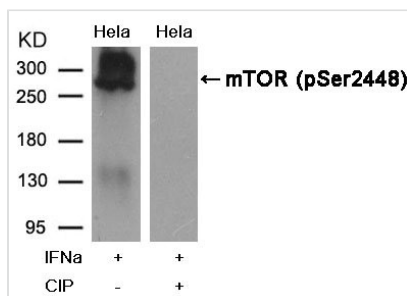




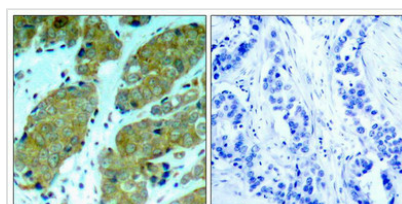
Phospho-MTOR (Ser2448) Antibody

Product Code	CSB-PA271384
Storage	Upon receipt, store at -20°C or -80°C. Avoid repeated freeze.
Uniprot No.	P42345
Immunogen	Peptide sequence around phosphorylation site of serine 2448 (T-D-S(p)-Y-S) derived from Human mTOR.
Raised In	Rabbit
Species Reactivity	Human,Mouse,Rat
Specificity	The antibody detects endogenous level of mTOR only when phosphorylated at serine 2448.
Tested Applications	ELISA,WB,IHC,IF;WB:1:500-1:1000,IHC:1:50-1:100,IF:1:100-1:200
Form	Supplied at 1.0mg/mL in phosphate buffered saline (without Mg ²⁺ and Ca ²⁺), pH 7.4, 150mM NaCl, 0.02% sodium azide and 50% glycerol.
Purification Method	Antibodies were produced by immunizing rabbits with synthetic phosphopeptide and KLH conjugates. Antibodies were purified by affinity-chromatography using epitope-specific phosphopeptide. Non-phospho specific antibodies were removed by chromatography
Clonality	Polyclonal
Alias	FRAP; FRAP1; FRAP2; RAFT1;
Product Type	Polyclonal Antibody
Immunogen Species	Homo sapiens (Human)
Target Names	MTOR

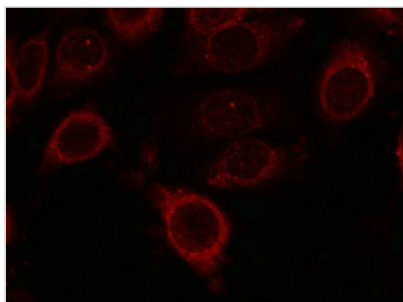
Image



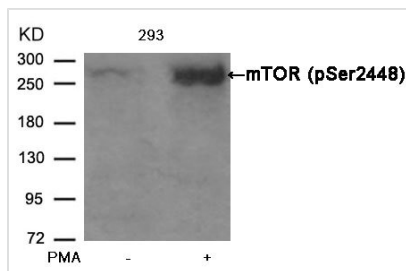
Western blot analysis of extracts from HeLa cells, treated with IFNa or calf intestinal phosphatase (CIP), using mTOR(Phospho-Ser2448) Antibody.



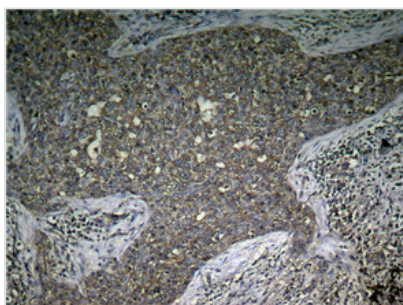
Immunohistochemical analysis of paraffin-embedded human breast carcinoma tissue using mTOR(Phospho-Ser2448) Antibody(left) or the same antibody preincubated with blocking peptide(right).



Immunofluorescence staining of methanol-fixed MCF cells using mTOR(Phospho-Ser2448) Antibody.



Western blot analysis of extracts from 293 cells untreated or treated with PMA using mTOR(Phospho-Ser2448) Antibody.



Immunohistochemical analysis of paraffin-embedded human breast carcinoma tissue using mTOR (Phospho-Ser2448) Antibody

Product Modify

Phospho-Ser2448

Usage

For Research Use Only. Not for use in diagnostic or therapeutic procedures.