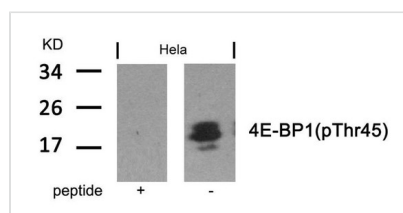




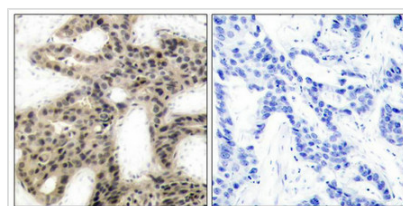
Phospho-EIF4EBP1 (Thr45) Antibody

Product Code	CSB-PA024565
Storage	Upon receipt, store at -20°C or -80°C. Avoid repeated freeze.
Uniprot No.	Q13541
Immunogen	Peptide sequence around phosphorylation site of threonine 45 (S-T-T(p)-P-G) derived from Human 4E-BP1.
Raised In	Rabbit
Species Reactivity	Human,Mouse,Rat
Specificity	The antibody detects endogenous level of 4E-BP1 only when phosphorylated at Threonine 45.
Tested Applications	ELISA,WB,IHC;WB:1:500-1:1000,IHC:1:50-1:100
Form	Supplied at 1.0mg/mL in phosphate buffered saline (without Mg ²⁺ and Ca ²⁺), pH 7.4, 150mM NaCl, 0.02% sodium azide and 50% glycerol.
Purification Method	Antibodies were produced by immunizing rabbits with synthetic phosphopeptide and KLH conjugates. Antibodies were purified by affinity-chromatography using epitope-specific phosphopeptide. Non-phospho specific antibodies were removed by chromatography
Clonality	Polyclonal
Alias	EIF4EBP1; PHAS-1;
Product Type	Polyclonal Antibody
Immunogen Species	Homo sapiens (Human)
Target Names	EIF4EBP1

Image



Western blot analysis of extracts from HeLa cells using 4E-BP1(Phospho-Thr45) Antibody and the same antibody preincubated with blocking peptide.



Immunohistochemical analysis of paraffin-embedded human breast carcinoma tissue using 4E-BP1(Phospho-Thr45) Antibody (left) or the same antibody preincubated with blocking peptide (right).

Product Modify Phospho-Thr45