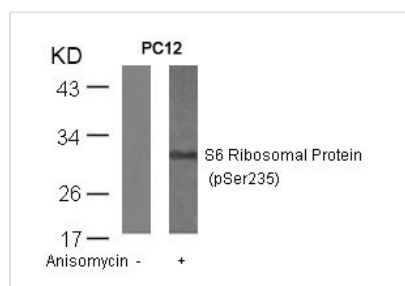




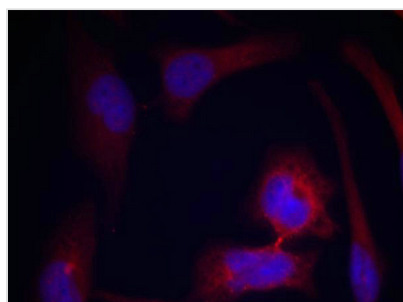
Phospho-RPS6 (Ser235) Antibody

Product Code	CSB-PA178097
Storage	Upon receipt, store at -20°C or -80°C. Avoid repeated freeze.
Uniprot No.	P62753
Immunogen	Peptide sequence around phosphorylation site of serine 235 (R-L-S(p)-S-L) derived from Human S6 Ribosomal Protein.
Raised In	Rabbit
Species Reactivity	Human,Mouse,Rat
Specificity	The antibody detects endogenous level of S6 Ribosomal protein only when phosphorylated at serine 235.
Tested Applications	ELISA,WB,IF;WB:1:500-1:1000,IF:1:100-1:200
Form	Supplied at 1.0mg/mL in phosphate buffered saline (without Mg ²⁺ and Ca ²⁺), pH 7.4, 150mM NaCl, 0.02% sodium azide and 50% glycerol.
Purification Method	Antibodies were produced by immunizing rabbits with synthetic phosphopeptide and KLH conjugates. Antibodies were purified by affinity-chromatography using epitope-specific phosphopeptide. Non-phospho specific antibodies were removed by chromatography
Clonality	Polyclonal
Alias	NP33; RPS6; RS6
Product Type	Polyclonal Antibody
Immunogen Species	Homo sapiens (Human)
Target Names	RPS6

Image



Western blot analysis of extracts from PC12 cells untreated or treated with anisomycin using S6 Ribosomal Protein(Phospho-Ser235) Antibody.



Immunofluorescence staining of methanol-fixed HeLa cells using S6 Ribosomal Protein(Phospho-Ser235) Antibody.

**Product Modify**

Phospho-Ser235