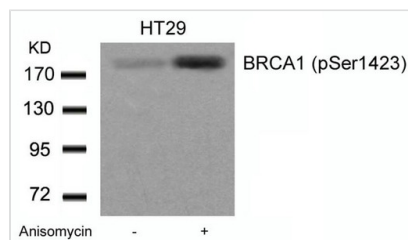




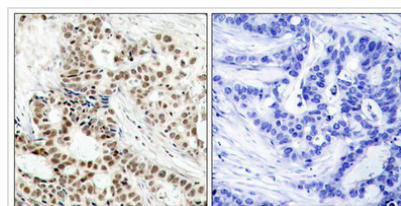
Phospho-BRCA1 (Ser1423) Antibody

Product Code	CSB-PA234605
Storage	Upon receipt, store at -20°C or -80°C. Avoid repeated freeze.
Uniprot No.	P38398
Immunogen	Peptide sequence around phosphorylation site of serine 1423 (H-G-S(p)-Q-P) derived from Human BRCA1.
Raised In	Rabbit
Species Reactivity	Human
Specificity	The antibody detects endogenous level of BRCA1 only when phosphorylated at serine 1423.
Tested Applications	ELISA,WB,IHC;WB:1:500-1:1000,IHC:1:50-1:100
Form	Supplied at 1.0mg/mL in phosphate buffered saline (without Mg ²⁺ and Ca ²⁺), pH 7.4, 150mM NaCl, 0.02% sodium azide and 50% glycerol.
Purification Method	Antibodies were produced by immunizing rabbits with synthetic phosphopeptide and KLH conjugates. Antibodies were purified by affinity-chromatography using epitope-specific phosphopeptide. Non-phospho specific antibodies were removed by chromatography
Clonality	Polyclonal
Alias	RNF53
Product Type	Polyclonal Antibody
Immunogen Species	Homo sapiens (Human)
Target Names	BRCA1

Image



Western blot analysis of extracts from HT29 cells untreated or treated with Anisomycin using BRCA1(Phospho-Ser1423) Antibody.



Immunohistochemical analysis of paraffin-embedded human breast carcinoma tissue using BRCA1(Phospho-Ser1423) Antibody(left) or the same antibody preincubated with blocking peptide(right).

Product Modify	Phospho-Ser1423
Usage	For Research Use Only. Not for use in diagnostic or therapeutic procedures.