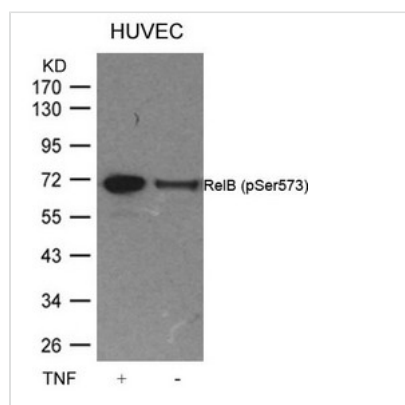




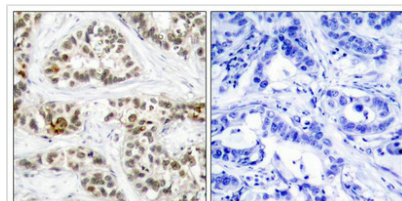
Phospho-RELB (Ser573) Antibody

Product Code	CSB-PA869552
Storage	Upon receipt, store at -20°C or -80°C. Avoid repeated freeze.
Uniprot No.	Q01201
Immunogen	Peptide sequence around phosphorylation site of serine 573 (L-L-S(p)-P-G) derived from Human RelB.
Raised In	Rabbit
Species Reactivity	Human,Mouse
Specificity	The antibody detects endogenous level of RelB only when phosphorylated at serine 573.
Tested Applications	ELISA,WB,IHC;WB:1:500-1:1000,IHC:1:50-1:100
Form	Supplied at 1.0mg/mL in phosphate buffered saline (without Mg ²⁺ and Ca ²⁺), pH 7.4, 150mM NaCl, 0.02% sodium azide and 50% glycerol.
Purification Method	Antibodies were produced by immunizing rabbits with synthetic phosphopeptide and KLH conjugates. Antibodies were purified by affinity-chromatography using epitope-specific phosphopeptide. Non-phospho specific antibodies were removed by chromatography
Clonality	Polyclonal
Alias	I-Rel
Product Type	Polyclonal Antibody
Immunogen Species	Homo sapiens (Human)
Target Names	RELB

Image



Western blot analysis of extracts from HUVEC cells untreated or treated with TNF using RelB(Phospho-Ser573) Antibody.



Immunohistochemical analysis of paraffin-embedded human breast carcinoma tissue using RelB(Phospho-Ser573) Antibody(left) or the same antibody preincubated with blocking peptide(right).

**Product Modify**

Phospho-Ser573