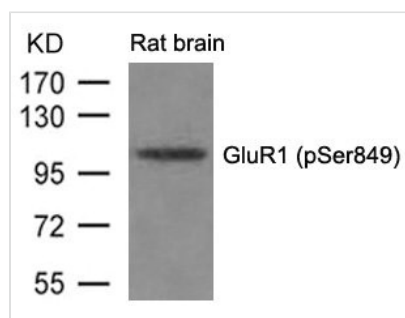




# Phospho-GRIA1 (Ser849) Antibody

<b>Product Code</b>	CSB-PA580841
<b>Storage</b>	Upon receipt, store at -20°C or -80°C. Avoid repeated freeze.
<b>Uniprot No.</b>	P42261
<b>Immunogen</b>	Peptide sequence around phosphorylation site of serine 849 (Q-Q-S(p)-I-N ) derived from Human GluR1.
<b>Raised In</b>	Rabbit
<b>Species Reactivity</b>	Human,Mouse,Rat
<b>Specificity</b>	The antibody detects endogenous level of GluR1 only when phosphorylated at serine 849.
<b>Tested Applications</b>	ELISA,WB;WB:1:500-1:1000
<b>Form</b>	Supplied at 1.0mg/mL in phosphate buffered saline (without Mg <sup>2+</sup> and Ca <sup>2+</sup> ), pH 7.4, 150mM NaCl, 0.02% sodium azide and 50% glycerol.
<b>Purification Method</b>	Antibodies were produced by immunizing rabbits with synthetic phosphopeptide and KLH conjugates. Antibodies were purified by affinity-chromatography using epitope-specific phosphopeptide. Non-phospho specific antibodies were removed by chromatography using
<b>Clonality</b>	Polyclonal
<b>Alias</b>	GLR1; GLUH1; GRIA1; GluR-1; GluR-A
<b>Product Type</b>	Polyclonal Antibody
<b>Immunogen Species</b>	Homo sapiens (Human)
<b>Target Names</b>	GRIA1

## Image



Western blot analysis of extracts from Rat brain tissue using GluR1(phospho-Ser849) Antibody.

**Product Modify** Phospho-Ser849