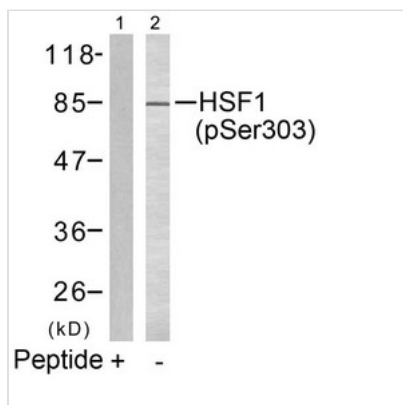




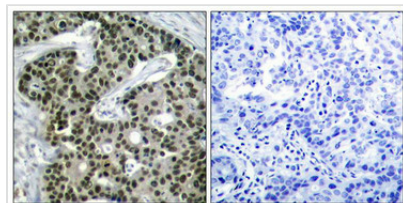
Phospho-HSF1 (Ser303) Antibody

Product Code	CSB-PA049595
Storage	Upon receipt, store at -20°C or -80°C. Avoid repeated freeze.
Uniprot No.	Q00613
Immunogen	Peptide sequence around phosphorylation site of serine 303 (P-P-S(p)-P-P) derived from Human HSF1.
Raised In	Rabbit
Species Reactivity	Human
Specificity	The antibody detects endogenous level of HSF1 only when phosphorylated at serine 303.
Tested Applications	ELISA,WB,IHC;WB:1:500-1:1000,IHC:1:50-1:100
Form	Supplied at 1.0mg/mL in phosphate buffered saline (without Mg ²⁺ and Ca ²⁺), pH 7.4, 150mM NaCl, 0.02% sodium azide and 50% glycerol.
Purification Method	Antibodies were produced by immunizing rabbits with synthetic phosphopeptide and KLH conjugates. Antibodies were purified by affinity-chromatography using epitope-specific phosphopeptide. Non-phospho specific antibodies were removed by chromatography usi
Clonality	Polyclonal
Alias	HSTF 1
Product Type	Polyclonal Antibody
Immunogen Species	Homo sapiens (Human)
Target Names	HSF1

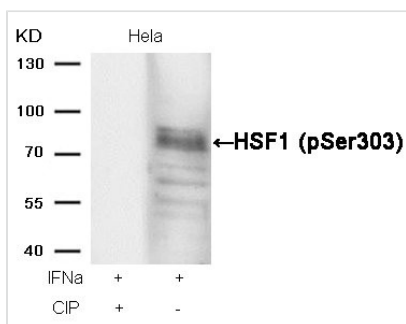
Image



Western blot analysis of extracts from MCF7 cells using HSF1(phospho-Ser303) Antibody(Lane 2) and the same antibody preincubated with blocking peptide(Lane1).



Immunohistochemical analysis of paraffin-embedded human breast carcinoma tissue using HSF1(Phospho-Ser303) Antibody(left) or the same antibody preincubated with blocking peptide(right).



Western blot analysis of extracts from HeLa cells, treated with IFNa or calf intestinal phosphatase (CIP), using HSF1 (phospho-Ser303) Antibody.

Product Modify

Phospho-Ser303

Usage

For Research Use Only. Not for use in diagnostic or therapeutic procedures.