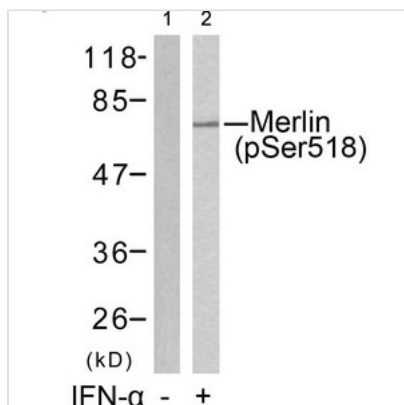




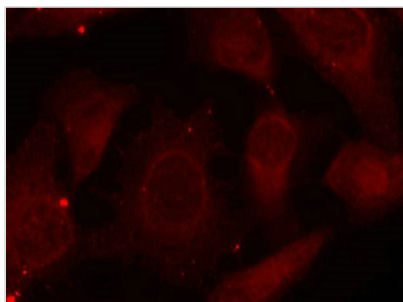
Phospho-NF2 (Ser518) Antibody

Product Code	CSB-PA149148
Storage	Upon receipt, store at -20°C or -80°C. Avoid repeated freeze.
Uniprot No.	P35240
Immunogen	Peptide sequence around phosphorylation site of serine 518 (R-L-S(p)-M-E) derived from Human Merlin.
Raised In	Rabbit
Species Reactivity	Human,Mouse,Rat
Specificity	The antibody detects endogenous level of Merlin only when phosphorylated at serine 518.
Tested Applications	ELISA,WB,IF;WB:1:500-1:1000,IF:1:100-1:200
Form	Supplied at 1.0mg/mL in phosphate buffered saline (without Mg ²⁺ and Ca ²⁺), pH 7.4, 150mM NaCl, 0.02% sodium azide and 50% glycerol.
Purification Method	Antibodies were produced by immunizing rabbits with synthetic phosphopeptide and KLH conjugates. Antibodies were purified by affinity-chromatography using epitope-specific phosphopeptide. Non-phospho specific antibodies were removed by chromatography usi
Clonality	Polyclonal
Alias	MERL; NF2; Neurofibromin 2; SCH; Schwannomerlin
Product Type	Polyclonal Antibody
Immunogen Species	Homo sapiens (Human)
Target Names	NF2

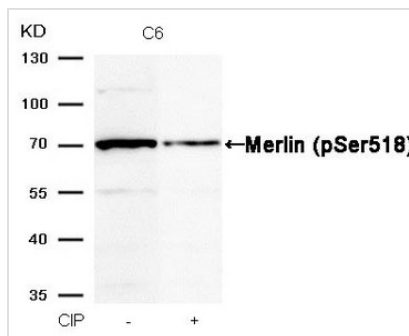
Image



Western blot analysis of extracts from HUVEC cells untreated(lane 1) or treated with IFN- α (lane 2) using Merlin(Phospho-Ser518) Antibody.



Immunofluorescence staining of methanol-fixed HeLa cells using Merlin(Phospho-Ser518) Antibody.



Western blot analysis of extracts from C6 cells, treated with calf intestinal phosphatase (CIP), using Merlin (Phospho-Ser518) Antibody.

Product Modify

Phospho-Ser518

Usage

For Research Use Only. Not for use in diagnostic or therapeutic procedures.