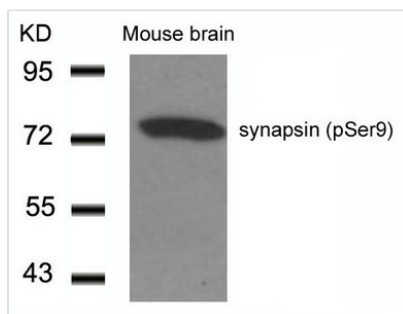




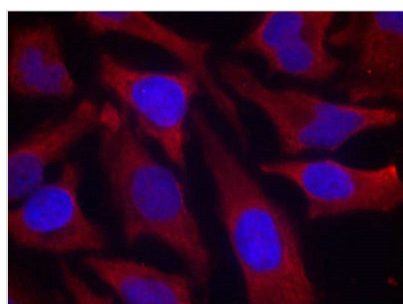
Phospho-SYN1 (Ser9) Antibody

Product Code	CSB-PA580795
Storage	Upon receipt, store at -20°C or -80°C. Avoid repeated freeze.
Uniprot No.	P17600
Immunogen	Peptide sequence around phosphorylation site of serine 9 (R-L-S(p)-D-S) derived from Human SYN1/synapsin.
Raised In	Rabbit
Species Reactivity	Human,Mouse,Rat
Specificity	The antibody detects endogenous level of synapsin only when phosphorylated at serine 9.
Tested Applications	ELISA,WB,IF;WB:1:500-1:1000,IF:1:100-1:200
Form	Supplied at 1.0mg/mL in phosphate buffered saline (without Mg ²⁺ and Ca ²⁺), pH 7.4, 150mM NaCl, 0.02% sodium azide and 50% glycerol.
Purification Method	Antibodies were produced by immunizing rabbits with synthetic phosphopeptide and KLH conjugates. Antibodies were purified by affinity-chromatography using epitope-specific phosphopeptide. Non-phospho specific antibodies were removed by chromatography usi
Clonality	Polyclonal
Alias	Syn-1, synapsin I
Product Type	Polyclonal Antibody
Immunogen Species	Homo sapiens (Human)
Target Names	SYN1

Image



Western blot analysis of extracts from Mouse Brain tissue using synapsin(Phospho-Ser9) Antibody.



Immunofluorescence staining of methanol-fixed Hela cells using synapsin(Phospho-Ser9) Antibody.



Product Modify

Phospho-Ser9

Usage

For Research Use Only. Not for use in diagnostic or therapeutic procedures.