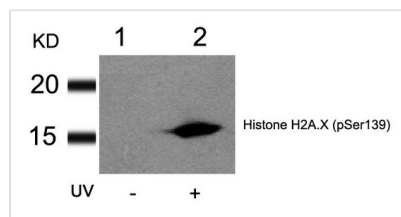




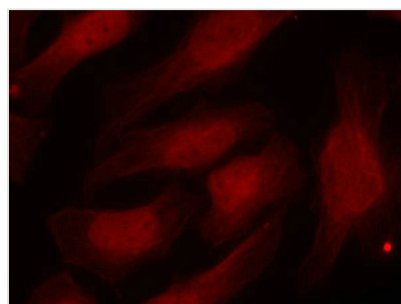
Phospho-Histone H2A.X (Ser139) Antibody

Product Code	CSB-PA105411
Storage	Upon receipt, store at -20°C or -80°C. Avoid repeated freeze.
Uniprot No.	P16104
Immunogen	Peptide sequence around phosphorylation site of serine 139 (Q-A-S(p)-Q-E) derived from Human Histone H2A.X.
Raised In	Rabbit
Species Reactivity	Human
Specificity	The antibody detects endogenous level of Histone H2A.X only when phosphorylated at serine 139.
Tested Applications	ELISA,WB,IF;WB:1:500-1:1000,IF:1:100-1:200
Form	Supplied at 1.0mg/mL in phosphate buffered saline (without Mg ²⁺ and Ca ²⁺), pH 7.4, 150mM NaCl, 0.02% sodium azide and 50% glycerol.
Purification Method	Antibodies were produced by immunizing rabbits with synthetic phosphopeptide and KLH conjugates. Antibodies were purified by affinity-chromatography using epitope-specific phosphopeptide. Non-phospho specific antibodies were removed by chromatography usi
Clonality	Polyclonal
Alias	H2A.X; H2AFX; H2a/x; HIST5-2AX;
Product Type	Polyclonal Antibody
Immunogen Species	Homo sapiens (Human)
Target Names	H2AFX

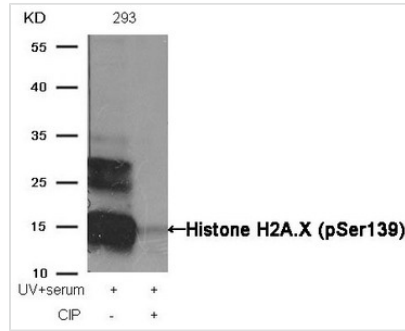
Image



Western blot analysis of extracts from HT29 cells untreated(lane 1) or treated with UV(lane 2) using Histone H2A.X(Phospho-Ser139) Antibody.



Immunofluorescence staining of methanol-fixed HeLa cells using Histone H2A.X(Phospho-Ser139) Antibody.



Western blot analysis of extracts from 293 cells, treated with UV+serum or calf intestinal phosphatase (CIP), using Histone H2A.X (Phospho-Ser139) Antibody.

Product Modify

Phospho-Ser139

Usage

For Research Use Only. Not for use in diagnostic or therapeutic procedures.