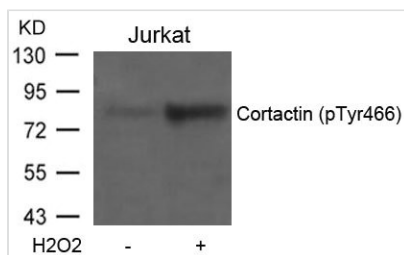




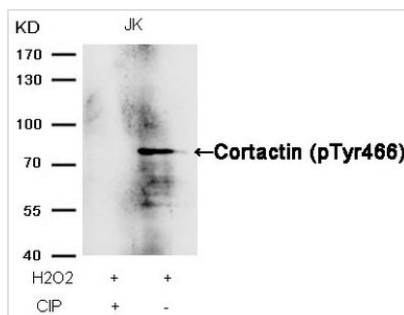
Phospho-CTTN (Tyr466) Antibody

Product Code	CSB-PA944105
Storage	Upon receipt, store at -20°C or -80°C. Avoid repeated freeze.
Uniprot No.	Q14247
Immunogen	Peptide sequence around phosphorylation site of tyrosine 466 (P-V-Y(p)-E-T) derived from Human CORTACTIN.
Raised In	Rabbit
Species Reactivity	Human, Mouse
Specificity	The antibody detects endogenous level of Cortactin only when phosphorylated at tyrosine 466.
Tested Applications	ELISA, WB; WB: 1:500-1:1000
Form	Supplied at 1.0mg/mL in phosphate buffered saline (without Mg ²⁺ and Ca ²⁺), pH 7.4, 150mM NaCl, 0.02% sodium azide and 50% glycerol.
Purification Method	Antibodies were produced by immunizing rabbits with synthetic phosphopeptide and KLH conjugates. Antibodies were purified by affinity-chromatography using epitope-specific phosphopeptide. Non-phospho specific antibodies were removed by chromatography
Clonality	Polyclonal
Alias	Amplaxin; CTTN; EMS1; SRC8;
Product Type	Polyclonal Antibody
Immunogen Species	Homo sapiens (Human)
Target Names	CTTN

Image



Western blot analysis of extracts from Jurkat cells untreated or treated with H₂O₂ using Cortactin(Phospho-Tyr466) Antibody.



Western blot analysis of extracts from JK cells, treated with H₂O₂ or calf intestinal phosphatase (CIP), using Cortactin (Phospho-Tyr466) Antibody.



Product Modify

Phospho-Tyr466

Usage

For Research Use Only. Not for use in diagnostic or therapeutic procedures.