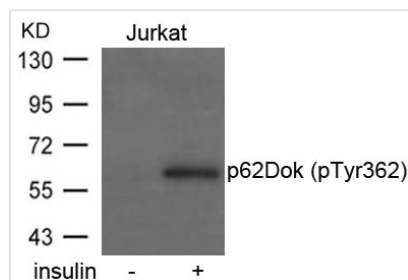




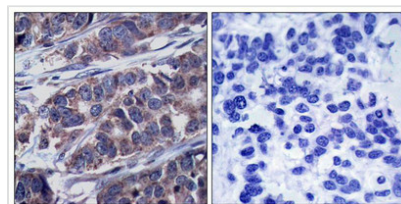
Phospho-DOK1 (Tyr362) Antibody

Product Code	CSB-PA997376
Storage	Upon receipt, store at -20°C or -80°C. Avoid repeated freeze.
Uniprot No.	Q99704
Immunogen	Peptide sequence around phosphorylation site of tyrosine 362 (P-I-Y(p)-D-E) derived from Human p62Dok.
Raised In	Rabbit
Species Reactivity	Human,Mouse,Rat
Specificity	The antibody detects endogenous level of p62Dok only when phosphorylated at tyrosine 362.
Tested Applications	ELISA,WB,IHC;WB:1:500-1:1000,IHC:1:50-1:100
Form	Supplied at 1.0mg/mL in phosphate buffered saline (without Mg ²⁺ and Ca ²⁺), pH 7.4, 150mM NaCl, 0.02% sodium azide and 50% glycerol.
Purification Method	Antibodies were produced by immunizing rabbits with synthetic phosphopeptide and KLH conjugates. Antibodies were purified by affinity-chromatography using epitope-specific phosphopeptide. Non-phospho specific antibodies were removed by chromatography usi
Clonality	Polyclonal
Alias	DOK1
Product Type	Polyclonal Antibody
Immunogen Species	Homo sapiens (Human)
Target Names	DOK1

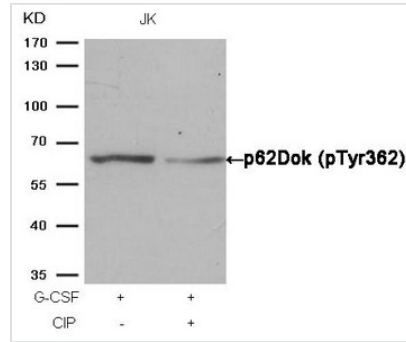
Image



Western blot analysis of extracts from Jurkat cells untreated or treated with insulin using p62Dok(phospho-Tyr362) Antibody.



Immunohistochemical analysis of paraffin-embedded human breast carcinoma tissue using p62Dok(Phospho-Tyr362) Antibody(left) or the same antibody preincubated with blocking peptide(right).



Western blot analysis of extracts from JK cells, treated with G-CSF or calf intestinal phosphatase (CIP), using p62Dok (phospho-Tyr362) Antibody.

Product Modify

Phospho-Tyr362

Usage

For Research Use Only. Not for use in diagnostic or therapeutic procedures.