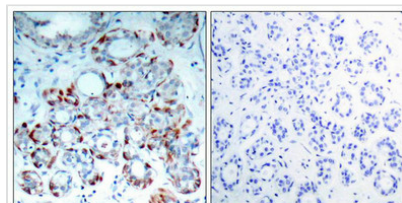




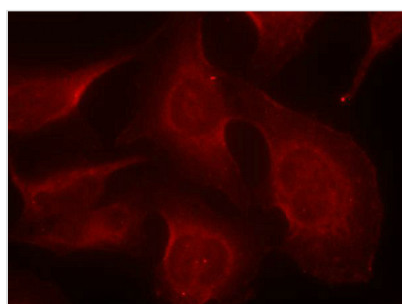
Phospho-BCL2L11 (Ser69) Antibody

Product Code	CSB-PA787889
Storage	Upon receipt, store at -20°C or -80°C. Avoid repeated freeze.
Uniprot No.	O43521
Immunogen	Peptide sequence around phosphorylation site of serine 69 (P-A-S(p)-P-G) derived from Human BIM.
Raised In	Rabbit
Species Reactivity	Human,Mouse,Rat
Specificity	The antibody detects endogenous level of BIM only when phosphorylated at serine 69.
Tested Applications	ELISA,IHC,IF;IHC:1:50-1:100,IF:1:100-1:200
Form	Supplied at 1.0mg/mL in phosphate buffered saline (without Mg ²⁺ and Ca ²⁺), pH 7.4, 150mM NaCl, 0.02% sodium azide and 50% glycerol.
Purification Method	Antibodies were produced by immunizing rabbits with synthetic phosphopeptide and KLH conjugates. Antibodies were purified by affinity-chromatography using epitope-specific phosphopeptide. Non-phospho specific antibodies were removed by chromatography
Clonality	Polyclonal
Alias	BCL2-like protein 11; BCL2L11; BOD; Bcl-2 related ovarian death protein;
Product Type	Polyclonal Antibody
Immunogen Species	Homo sapiens (Human)
Target Names	BCL2L11

Image



Immunohistochemical analysis of paraffin-embedded human breast carcinoma tissue using BIM(Phospho-Ser69) Antibody(left) or the same antibody preincubated with blocking peptide(right).



Immunofluorescence staining of methanol-fixed Hela cells using BIM(Phospho-Ser69) Antibody.

Product Modify Phospho-Ser69