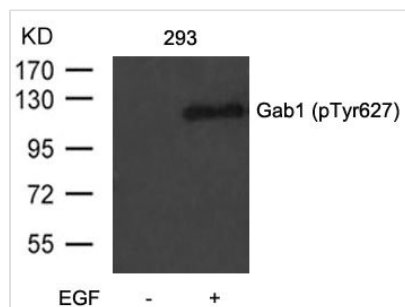




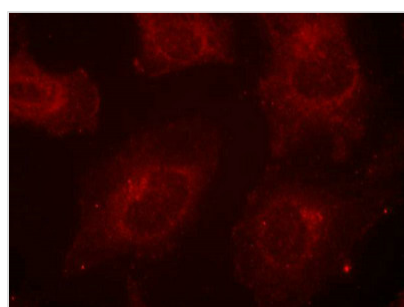
# Phospho-GAB1 (Tyr627) Antibody

<b>Product Code</b>	CSB-PA827140
<b>Storage</b>	Upon receipt, store at -20°C or -80°C. Avoid repeated freeze.
<b>Uniprot No.</b>	Q13480
<b>Immunogen</b>	Peptide sequence around phosphorylation site of tyrosine 627 (V-E-Y(p)-L-D) derived from Human Gab1.
<b>Raised In</b>	Rabbit
<b>Species Reactivity</b>	Human,Mouse
<b>Specificity</b>	The antibody detects endogenous level of Gab1 only when phosphorylated at tyrosine 627.
<b>Tested Applications</b>	ELISA,WB,IF;WB:1:500-1:1000,IF:1:100-1:200
<b>Form</b>	Supplied at 1.0mg/mL in phosphate buffered saline (without Mg <sup>2+</sup> and Ca <sup>2+</sup> ), pH 7.4, 150mM NaCl, 0.02% sodium azide and 50% glycerol.
<b>Purification Method</b>	Antibodies were produced by immunizing rabbits with synthetic phosphopeptide and KLH conjugates. Antibodies were purified by affinity-chromatography using epitope-specific phosphopeptide. Non-phospho specific antibodies were removed by chromatography usi
<b>Clonality</b>	Polyclonal
<b>Alias</b>	Growth factor receptor bound protein 2-associated protein 1
<b>Product Type</b>	Polyclonal Antibody
<b>Immunogen Species</b>	Homo sapiens (Human)
<b>Target Names</b>	GAB1

## Image



Western blot analysis of extracts from 293 cells untreated or treated with EGF using Gab1(Phospho-Tyr627) Antibody.



Immunofluorescence staining of methanol-fixed HeLa cells using Gab1(Phospho-Tyr627) Antibody.



---

**Product Modify**

Phospho-Tyr627

---

**Usage**

For Research Use Only. Not for use in diagnostic or therapeutic procedures.