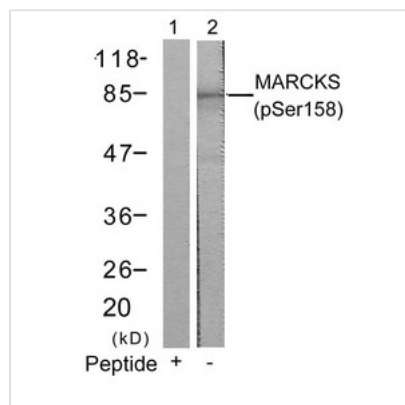




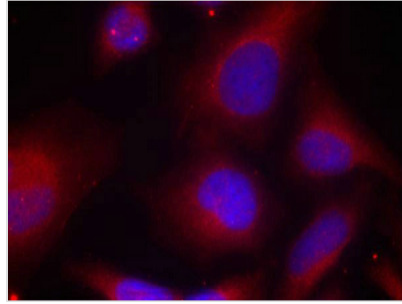
Phospho-MARCKS (Ser158) Antibody

| | |
|----------------------------|--|
| Product Code | CSB-PA876118 |
| Storage | Upon receipt, store at -20°C or -80°C. Avoid repeated freeze. |
| Uniprot No. | P29966 |
| Immunogen | Peptide sequence around phosphorylation site of serine 158 (R-F-S(p)-F-K) derived from Human MARCKS. |
| Raised In | Rabbit |
| Species Reactivity | Human,Mouse,Rat |
| Specificity | The antibody detects endogenous level of MARCKS only when phosphorylated at serine 158. |
| Tested Applications | ELISA,WB,IF;WB:1:500-1:1000,IF:1:100-1:200 |
| Form | Supplied at 1.0mg/mL in phosphate buffered saline (without Mg ²⁺ and Ca ²⁺), pH 7.4, 150mM NaCl, 0.02% sodium azide and 50% glycerol. |
| Purification Method | Antibodies were produced by immunizing rabbits with synthetic phosphopeptide and KLH conjugates. Antibodies were purified by affinity-chromatography using epitope-specific phosphopeptide. Non-phospho specific antibodies were removed by chromatography use |
| Clonality | Polyclonal |
| Alias | MACS; MARCS; PKCSL; PRKCSL; Protein kinase C substrate |
| Product Type | Polyclonal Antibody |
| Immunogen Species | Homo sapiens (Human) |
| Target Names | MARCKS |

Image



Western blot analysis of extracts from 3T3 cells using MARCKS(Phospho-Ser158) Antibody(Lane 2) and the same antibody preincubated with blocking peptide(Lane1).



Immunofluorescence staining of methanol-fixed HeLa cells using MARCKS(Phospho-Ser158) Antibody.

Product Modify

Phospho-Ser158

Usage

For Research Use Only. Not for use in diagnostic or therapeutic procedures.