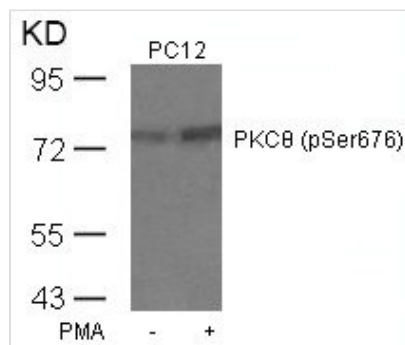




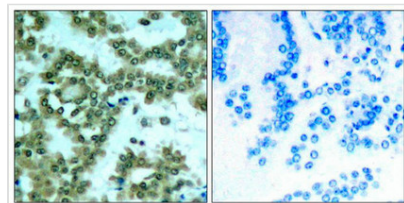
Phospho-PRKCQ (Ser676) Antibody

Product Code	CSB-PA075054
Storage	Upon receipt, store at -20°C or -80°C. Avoid repeated freeze.
Uniprot No.	Q04759
Immunogen	Peptide sequence around phosphorylation site of serine 676 (R-L-S(p)-F-A) derived from Human PKCth.
Raised In	Rabbit
Species Reactivity	Human,Mouse,Rat
Specificity	The antibody detects endogenous level of PKCth only when phosphorylated at serine 676.
Tested Applications	ELISA,WB,IHC,IF;WB:1:500-1:1000,IHC:1:50-1:100,IF:1:100-1:200
Form	Supplied at 1.0mg/mL in phosphate buffered saline (without Mg ²⁺ and Ca ²⁺), pH 7.4, 150mM NaCl, 0.02% sodium azide and 50% glycerol.
Purification Method	Antibodies were produced by immunizing rabbits with synthetic phosphopeptide and KLH conjugates. Antibodies were purified by affinity-chromatography using epitope-specific phosphopeptide. Non-phospho specific antibodies were removed by chromatography
Clonality	Polyclonal
Alias	KPCT; PKC-theta; PKCQ; PRKCQ; PRKCT
Product Type	Polyclonal Antibody
Immunogen Species	Homo sapiens (Human)
Target Names	PRKCQ

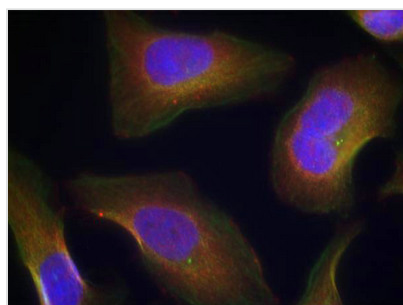
Image



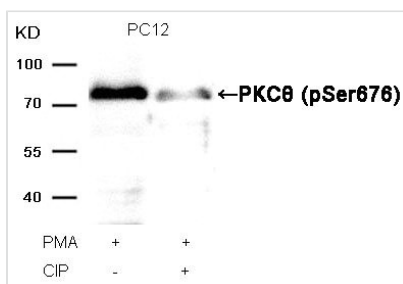
Western blot analysis of extracts from PC12 cells untreated or treated with PMA using PKCth(Phospho-Ser676) Antibody.



Immunohistochemical analysis of paraffin-embedded human lung carcinoma tissue using PKCth(Phospho-Ser676) Antibody(left) or the same antibody preincubated with blocking peptide(right).



Immunofluorescence staining of methanol-fixed Hela cells using PKCth(Phospho-Ser676) Antibody.



Western blot analysis of extracts from PC12 cells, treated with PMA or calf intestinal phosphatase (CIP), using PKCθ (Phospho-Ser676) Antibody.

Product Modify

Phospho-Ser676