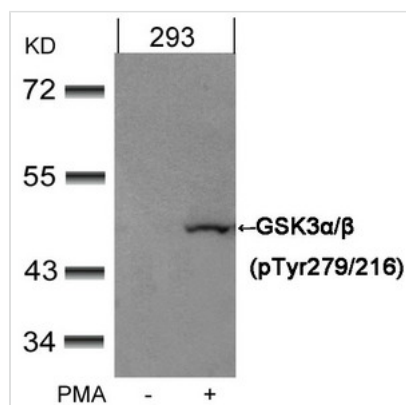




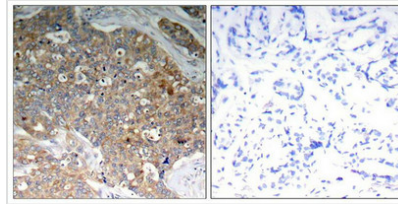
Phospho-GSK3A/GSK3B (Tyr279/216) Antibody

Product Code	CSB-PA575559
Storage	Upon receipt, store at -20°C or -80°C. Avoid repeated freeze.
Immunogen	Peptide sequence around phosphorylation site of tyrosine 279/216 (V-S-Y(p)-I-C) derived from Human GSK3α/β .
Raised In	Rabbit
Species Reactivity	Human,Mouse,Rat
Specificity	The antibody detects endogenous level of GSK3α/β only when phosphorylated at tyrosine 279/216.
Tested Applications	ELISA,WB,IHC,IF;WB:1:500-1:1000,IHC:1:50-1:100,IF:1:100-1:200
Form	Supplied at 1.0mg/mL in phosphate buffered saline (without Mg ²⁺ and Ca ²⁺), pH 7.4, 150mM NaCl, 0.02% sodium azide and 50% glycerol.
Purification Method	Antibodies were produced by immunizing rabbits with synthetic phosphopeptide and KLH conjugates. Antibodies were purified by affinity-chromatography using epitope-specific phosphopeptide. Non-phospho specific antibodies were removed by chromatography
Clonality	Polyclonal
Alias	Factor A; GSK-3 alpha/beta; kinase GSK3-alpha/beta
Product Type	Polyclonal Antibody
Immunogen Species	Homo sapiens (Human)
Target Names	GSK3A/GSK3B
Accession NO.	Swiss-Prot: P49840/P49841 NCBI Protein: NP_063

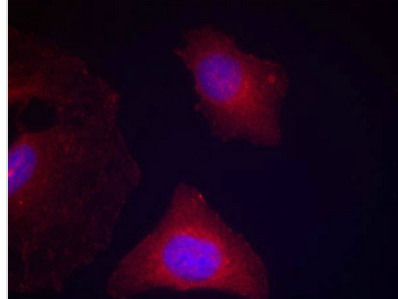
Image



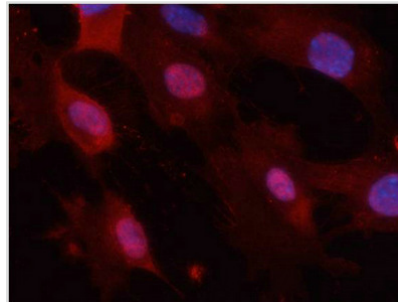
Western blot analysis of extracts from 293 cells untreated or treated with PMA using GSK3α/β(Phospho-Tyr279/216) Antibody.



Immunohistochemical analysis of paraffin-embedded human breast carcinoma tissue using GSK3 α / β (Phospho-Tyr279/216) Antibody (left) or the same antibody preincubated with blocking peptide (right).



Immunofluorescence staining of methanol-fixed HeLa cells using GSK3 α / β (Phospho-Tyr279/216) Antibody.



Immunofluorescence staining of methanol-fixed MEF cells using GSK3 α / β (Phospho-Tyr279/216) Antibody.

Product Modify

Phospho-Tyr279/216

Usage

For Research Use Only. Not for use in diagnostic or therapeutic procedures.