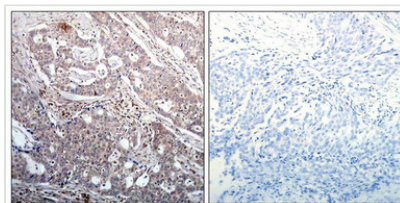




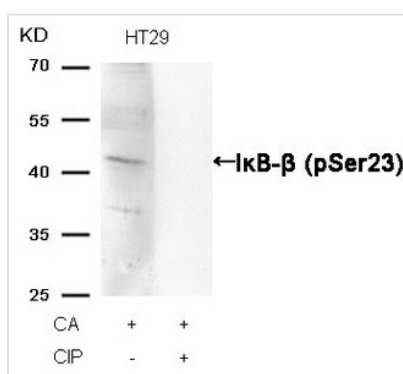
Phospho-NFKBIB (Ser23) Antibody

| | |
|----------------------------|--|
| Product Code | CSB-PA292098 |
| Storage | Upon receipt, store at -20°C or -80°C. Avoid repeated freeze. |
| Uniprot No. | Q15653 |
| Immunogen | Peptide sequence around phosphorylation site of serine 23 (L-G-S(p)-L-G) derived from Human IκB-b. |
| Raised In | Rabbit |
| Species Reactivity | Human,Mouse,Rat |
| Specificity | The antibody detects endogenous level of IκB-b only when phosphorylated at serine 23. |
| Tested Applications | ELISA,WB,IHC;WB:1:500-1:1000,IHC:1:50-1:100 |
| Form | Supplied at 1.0mg/mL in phosphate buffered saline (without Mg ²⁺ and Ca ²⁺), pH 7.4, 150mM NaCl, 0.02% sodium azide and 50% glycerol. |
| Purification Method | Antibodies were produced by immunizing rabbits with synthetic phosphopeptide and KLH conjugates. Antibodies were purified by affinity-chromatography using epitope-specific phosphopeptide. Non-phospho specific antibodies were removed by chromatography usi |
| Clonality | Polyclonal |
| Alias | I-kappa-B-beta; IKB-B; IKBB; NF-kappa-BIB; NF-kappaB inhibitor beta |
| Product Type | Polyclonal Antibody |
| Immunogen Species | Homo sapiens (Human) |
| Target Names | NFKBIB |

Image



Immunohistochemical analysis of paraffin-embedded human breast carcinoma tissue using IκB-b(Phospho-Ser23) Antibody(left) or the same antibody preincubated with blocking peptide(right).



Western blot analysis of extracts from HT29 cells, treated with CA or calf intestinal phosphatase (CIP), using IκB-β (Phospho-Ser23) Antibody.



Product Modify

Phospho-Ser23

Usage

For Research Use Only. Not for use in diagnostic or therapeutic procedures.