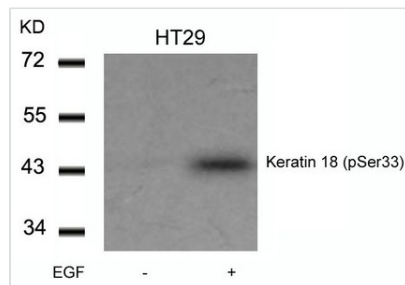




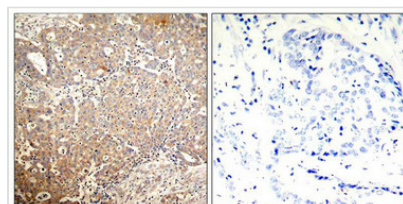
Phospho-KRT18 (Ser33) Antibody

Product Code	CSB-PA044751
Storage	Upon receipt, store at -20°C or -80°C. Avoid repeated freeze.
Uniprot No.	P05783
Immunogen	Peptide sequence around phosphorylation site of serine 33 (A-A-S(p)-V-Y) derived from Human Keratin 18 (CK18).
Raised In	Rabbit
Species Reactivity	Human
Specificity	The antibody detects endogenous level of Keratin 18 only when phosphorylated at serine 33.
Tested Applications	ELISA,WB,IHC;WB:1:500-1:1000,IHC:1:50-1:100
Form	Supplied at 1.0mg/mL in phosphate buffered saline (without Mg ²⁺ and Ca ²⁺), pH 7.4, 150mM NaCl, 0.02% sodium azide and 50% glycerol.
Purification Method	Antibodies were produced by immunizing rabbits with synthetic phosphopeptide and KLH conjugates. Antibodies were purified by affinity-chromatography using epitope-specific phosphopeptide. Non-phospho specific antibodies were removed by chromatography
Clonality	Polyclonal
Alias	CK 18; CK18; CYK18; Cytokeratin endo B; K18
Product Type	Polyclonal Antibody
Immunogen Species	Homo sapiens (Human)
Target Names	KRT18

Image



Western blot analysis of extracts from HT29 cells untreated or treated with EGF using Keratin 18(Phospho-Ser33) Antibody.



Immunohistochemical analysis of paraffin-embedded human breast carcinoma tissue using Keratin 18(Phospho-Ser33) Antibody(left) or the same antibody preincubated with blocking peptide(right).

Product Modify Phospho-Ser33



Usage

For Research Use Only. Not for use in diagnostic or therapeutic procedures.